

## SPEC SHEET + MEASUREMENTS



### Nike Sphere Dry Diamond Polo. 354055

#### Product photo



Achieve the pinnacle of performance in this style that pairs a rich diamond texture with Nike Sphere Dry moisture management technology. The ultramodern fabric has a textured inside surface that minimizes cling by allowing only a portion of the shirt to come in contact with the skin. Perfect for any occasion, this exceptional shirt is designed for maximum movement and increased air flow. Finished with a self-fabric collar and open hem sleeves. Features a three-button placket. Pearlized buttons are selected to complement the shirt color. The contrast Swoosh design trademark is embroidered on the left sleeve. Made of 6.35-ounce, 89/11 polyester/spandex.

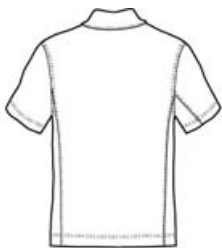
#### **CARE INSTRUCTIONS**

Machine wash warm, with like colors. Do not bleach. Do not use softeners. Tumble dry low. Cool iron. Do not dry clean.

#### Sketches



front



back

## PRODUCT MEASUREMENTS

---

	XS	S	M	L	XL	2XL	3XL	4XL
Body Length at Back	27 1/2	28 1/2	29 1/2	30 1/2	32	33 1/2	34 1/2	35 1/2
Chest	19	20 1/2	22	23 1/2	25	26 1/2	28	29 1/2
Sleeve Length	19 1/4	20	20 3/4	21 1/2	22	22 1/2	23	23 1/2

---

**Body Length at Back:** Measured from high point shoulder to finished hem at back.

**Chest:** Measured across the chest one inch below armhole when laid flat.

**Sleeve Length:** Start at center of neck and measure down shoulder, down sleeve to hem.

## SIZE CHARTS

---

	XS	S	M	L	XL	2XL	3XL	4XL
Chest	32-35	35 - 37 1/2	37 1/2 - 41	41 - 44	44 - 48 1/2	48 1/2 - 53 1/2	53 1/2 - 58	58 - 63

---

## HOW TO MEASURE

---



### CHEST

Measure under the arm and around the fullest part of the chest with arms down, keeping tape horizontal.