

SPEC SHEET + MEASUREMENTS

PORT AUTHORITY.

Port Authority® Market Full-Length Bib Apron. A800

Product photo



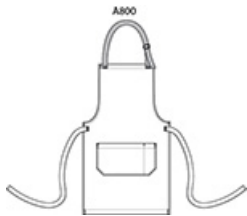
Craftsman styling creates a signature look in this apron that's perfect for bistros, pubs, cooking classes and more. The wrinkle-resistant fabric has a denim-like look which blends performance with style to make a sophisticated statement.

- 7-ounce, 60/40 cotton/poly yarn-dyed twill
- Adjustable contrast webbing neck strap with antique-finish metal slider
- Patch pocket, pen pocket
- Self-fabric waist ties
- Contrast stitch details
- Measures: 25"w x 34.5"l

CARE INSTRUCTIONS

Machine Wash Cold, Only Non Chlorine Bleach when needed, Tumble Dry Low, Do Not Dry Clean.

Sketches



front

SPEC SHEET + MEASUREMENTS

PORT AUTHORITY

Port Authority® Market Full-Length Bib Apron. A800

PRODUCT MEASUREMENTS

OSFA

Apron
Waist
Width

25

Length

34 1/2

Apron Waist Width: Measure under the waist straps straight across, edge to edge.

Length: Measured from center front neck to hem.

COLORS



Ash Grey
PMS 425C



Dark Midnight
PMS 426C