

## SPEC SHEET + MEASUREMENTS

*Brooks Brothers*

Brooks Brothers® Tech Stretch Patterned Shirt. BB18006

### Product photo



Achieve a polished look and all-day comfort with this game-changing lightweight shirt, a modern interpretation of a timeless silhouette.

- 3-ounce, 77/20/3 cotton/nylon/spandex
- Open collar with removable stays
- French placket
- Pearlized buttons
- Rounded, adjustable cuffs

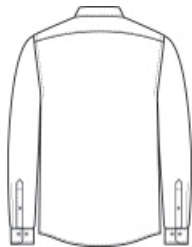
### CARE INSTRUCTIONS

Machine Wash Warm With Like Colors. Do Not Bleach. Tumble Dry Low. Remove Promptly. Cool Iron If Necessary.

### Sketches



front



back

# SPEC SHEET + MEASUREMENTS



## Brooks Brothers® Tech Stretch Patterned Shirt. BB18006

### PRODUCT MEASUREMENTS

	XS	S	M	L	XL	2XL	3XL	4XL
Body Length at Back	29 1/2	30	30 1/2	31	31 1/2	32	32 1/2	33
Chest	19 1/4	20 3/4	22 1/4	23 3/4	25 3/4	27 3/4	30 1/4	33 1/4
Neck Circumference	15 1/2	16	16 3/4	17 1/2	18 1/4	19	19 7/8	20 7/8
Sleeve Length from Center Back	33 3/4	34 1/2	35 1/4	36	36 3/4	37 1/2	38 1/4	39

**Body Length at Back:** Measured from high point shoulder to finished hem at back.

**Chest:** Measured across the chest one inch below armhole when laid flat.

**Neck Circumference:** Measure from center of button to end of buttonhole along the center of the collar stand.

**Sleeve Length from Center Back:** Measure from Center Back neck to shoulder point to sleeve hem.

# SPEC SHEET + MEASUREMENTS

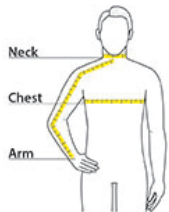


## Brooks Brothers® Tech Stretch Patterned Shirt. BB18006

### SIZE CHARTS

	XS	S	M	L	XL	2XL	3XL	4XL
Chest	32-34	35-37	38-40	41-43	44-47	48-51	52-56	57-61
Neck	14 1/2 - 15	15 - 15 1/2	15 1/2 - 16	16 - 16 1/2	16 1/2 - 17	17 - 17 1/2	17 1/2 - 18	18 - 18 1/2
Arm	30 1/2	32	34	35	36 1/2	37 1/2	38 1/2	39 1/2

### HOW TO MEASURE



**Neck** Measure around the fullest part of the neck at the base.

**Chest Width** Measure under the arm and around the fullest part of the chest with arms down, keeping tape horizontal. **Arm** Place hand on hip. Start at the center of the back of the neck and measure across the shoulder, to the elbow, and then down to the wrist.

### COLORS



Charter Blue  
Check



Dark Pine  
Multi Check



Deep Black  
Check



Navy Blazer  
Multi Check



Navy Blazer/  
White Grid  
Check



Newport Blue/  
Pearl Pink  
Fine Check



White/  
Newport Blue  
Grid Check