

# SPEC SHEET + MEASUREMENTS



## Cotopaxi® Women's Amado 1/2-Zip Fleece. COTOW1692

### Product photo



Made with fully recycled fleece, Amado Fleece delivers sustainably-minded comfort. These colorblocked pieces pair perfectly with your favorite tee or down jacket, but they're also awesome worn solo.

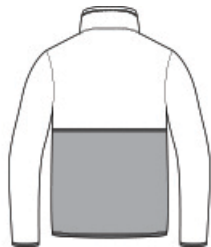
- 5-ounce, 100% recycled polyester fleece
- Zip-through collar
- Exposed zipper with contrast trim
- Elastic cuff binding
- Elastic binding at hem
- Woven Cotopaxi logo on left hem

**Care Instructions** Machine Wash Cold. Wash With Like Colors. Do Not Bleach. Tumble Dry Low. Do Not Iron. Do Not Dry Clean.

### Sketches



front



back

# SPEC SHEET + MEASUREMENTS



Cotopaxi® Women's Amado 1/2-Zip Fleece. COTOW1692

## PRODUCT MEASUREMENTS

	S	M	L	XL	2XL
Size	4/6	8/10	12/14	16/18	20
Body Length at Back	25 3/8	26 1/8	26 7/8	27 3/4	28 1/2
Bust	19 1/2	20 5/8	22 1/8	23 5/8	25 3/8
Sleeve Length from Center Back	32 7/8	33 3/8	34 1/4	35	35 3/4

**Body Length at Back:** Measured from high point shoulder to finished hem at back.

**Bust:** Measured across the chest one inch below armhole when laid flat.

**Sleeve Length from Center Back:** Measure from Center Back neck to shoulder point to sleeve hem.

## SIZE CHARTS

	XS	S	M	L	XL	2XL
Size	0/2	4/6	8/10	12/14	16/18	20
Bust	32 1/2-33 1/2	34 1/2-35 1/2	36 1/2-37 1/2	38 1/2-41	42-44	45-47

# SPEC SHEET + MEASUREMENTS



Cotopaxi® Women's Amado 1/2-Zip Fleece. COTOW1692

## HOW TO MEASURE

---



### **BUST**

Measure under the arm and around the fullest part of the bust with arms down, keeping tape horizontal.

## COLORS

---



Atlantic/ Black  
PMS 7692C



Canyon/  
Maritime  
PMS 7417



Cream/ Fjord  
PMS 4240C



Smoke/  
Cinder  
PMS 4276C