

# SPEC SHEET + MEASUREMENTS

**CornerStone**

CornerStone® Washed Duck Cloth Chore Coat. CSJ50

## Product photo



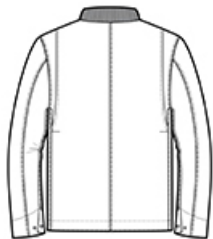
In the shop, on the site or on the street, this enzyme-washed chore coat will keep you warm as you get the work done. Extra-durable, this versatile coat has a worn-in look, soft feel and longer length for additional coverage.

- 12-ounce, 100% cotton enzyme-washed duck cloth
- 100% acrylic plaid flannel body lining
- 3-ounce polyfill quilted polyester sleeve lining
- Corduroy-trimmed collar
- Metal rivets at crucial stress points
- Flap chest pockets
- Adjustable snap cuffs
- Front hand warmer pockets
- Interior pockets: one with snap closure; the other is open
- Decoration access pocket

## Sketches



front



back

# SPEC SHEET + MEASUREMENTS



CornerStone® Washed Duck Cloth Chore Coat. CSJ50

## PRODUCT MEASUREMENTS

	XS	S	M	L	XL	2XL	3XL	4XL
Body Length at Back	28	29	30	31	32	33	33 1/2	34
Chest	21	22 1/2	24	25 1/2	27	28 1/2	30 1/2	32 1/2
Sleeve Length	35 1/4	36	36 3/4	37 1/2	38 1/4	39	39 3/4	40 1/2

**Body Length at Back:** Measured from high point shoulder to finished hem at back.

**Chest:** Measured across the chest one inch below armhole when laid flat.

**Sleeve Length:** Start at center of neck and measure down shoulder, down sleeve to hem.

## SIZE CHARTS

	XS	S	M	L	XL	2XL	3XL	4XL	5XL	6XL
Chest	33-34	35-37	38-40	41-44	46-48	49-51	52-55	56-59	60-63	64-67

## HOW TO MEASURE



### CHEST

Measure under the arm and around the fullest part of the chest with arms down, keeping tape horizontal.