

# SPEC SHEET + MEASUREMENTS



## CornerStone® ANSI 107 Class 3 Economy Waterproof Insulated Bomber Jacket. CSJ500

### Product photo



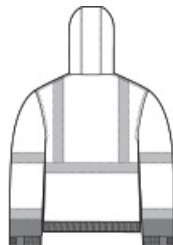
Stand out on the job—and stand up to the elements—in this fully seam-sealed, waterproof, insulated jacket which meets the highest class of visibility.

- 100% polyester woven 300-denier oxford shell with durable water-repellent (DWR) finish
- 5.2-ounce, 100% polyfill insulation, box diamond quilted body and sleeve lining
- Black bottom front and lower sleeves for a cleaner appearance
- Fabric waterproof rating: 5000MM
- Fabric breathability rating: 5000G/M<sup>2</sup>
- Fully seam-sealed
- Adjustable, zip-removable rain hood with hook and loop closure and toggles
- Durable, reflective 2-inch tape meets ANSI 107 requirements and provides 360-degree visibility on body and sleeves
- Full-length exterior storm flap with hook and loop closure
- Left chest bellows pocket with flap and hook and loop closure
- Two open lower front pockets
- Molded center front zippered closure
- Elastic cuffs with adjustable hook and loop closures
- Elastic hem
- Decoration access pocket
- This garment must be fully zipped to be in compliance with ANSI 107 standards

### Sketches



front



back

### CARE INSTRUCTIONS

# SPEC SHEET + MEASUREMENTS



## CornerStone® ANSI 107 Class 3 Economy Waterproof Insulated Bomber Jacket. CSJ500

Machine Wash Cold With Like Colors. Only Non-Chlorine Bleach When Needed. Do Not Use Fabric Softener. Tumble Dry Low. Do Not Iron.

### PRODUCT MEASUREMENTS

	S	M	L	XL	2XL	3XL	4XL	5XL
Body Length at Back	29 1/2	30 1/2	30 1/2	31	31 1/2	32	32 1/2	33
Chest	22	23 1/2	25	26 1/2	28	30	32	34
Sleeve Length from Center Back	36	36 3/4	37 1/2	38 1/4	39	39 3/4	40 1/2	41 1/4

- Body Length at Back:** Measured from high point shoulder to finished hem at back.
- Chest:** Measured across the chest one inch below armhole when laid flat.
- Sleeve Length from Center Back:** Measure from Center Back neck to shoulder point to sleeve hem.

### SIZE CHARTS

	S	M	L	XL	2XL	3XL	4XL	5XL
Chest	35-37	38-40	41-43	44-46	47-49	50-53	54-57	58-60

# SPEC SHEET + MEASUREMENTS



CornerStone® ANSI 107 Class 3 Economy Waterproof  
Insulated Bomber Jacket. CSJ500

## HOW TO MEASURE

---



### CHEST

Measure under the arm and  
around the fullest part of the chest  
with arms down, keeping tape  
horizontal.

## COLORS

---



Safety Orange Safety Yellow