

SPEC SHEET + MEASUREMENTS



CornerStone® ANSI 107 Class 3 Waterproof Ripstop 3-In-1 Parka. CSJ502

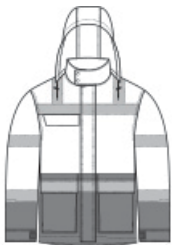
Product photo



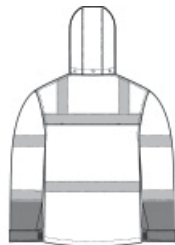
This ultraversatile 3-in-1 parka lets you wear layers separately or together for full storm-fighting power. It tackles the weather so you can safely tackle any ANSI 107 Class 3 work environment.

- 100% polyester 300-denier ripstop shell with durable water-repellent (DWR) finish
- 100% polyester lining
- Black bottom front and lower sleeves for a cleaner appearance
- Shell's fabric waterproof rating: 5000MM
- Shell's fabric breathability rating: 5000G/M²
- Fully seam-sealed shell
- Adjustable, snap-removable rain hood
- Durable, reflective 2-inch tape meets ANSI 107 requirements and provides 360-degree visibility on body and sleeves
- Full-length interior and exterior storm flaps with snap and hook and loop closure
- Vented cape back with hook and loop closure
- Right chest pocket with flap and snap closure and clear, retractable ID holder
- Two lower front bellowed pockets with flaps and hook and loop closures, side entries
- Center front zippered pocket to hold a tablet
- Molded center front zippered closure with rubber zipper pull
- Gusseted cuffs with adjustable hook and loop closures
- Elastic hem
- Decoration access pocket in shell

Sketches



front



back

SPEC SHEET + MEASUREMENTS



CornerStone® ANSI 107 Class 3 Waterproof Ripstop 3-In-1 Parka. CSJ502

- Non-ANSI, 8.6-ounce, 100% polyester smooth-faced inner full-zip hoodie
- Non-ANSI, black, inner smooth-faced fleece hoodie can be zipped in and secured by snap attachments inside shell
- Non-ANSI inner smooth-faced fleece hoodie features a durable, reflective tape at upper sleeves, molded center front zippered closure, rib knit cuffs and hem and taped neck. Toggles at hood.
- This garment must be fully zipped to be in compliance with ANSI 107 standards

CARE INSTRUCTIONS

Machine Wash Cold With Like Colors. Do Not Bleach. Do Not Use Fabric Softener. Tumble Dry Low. Do Not Iron.

PRODUCT MEASUREMENTS

	S	M	L	XL	2XL	3XL	4XL	5XL
Body Length at Back	31 1/2	32	32 1/2	33 1/2	34 1/2	35	35 1/2	36
Chest	22 1/2	23 1/2	25	26 1/2	28	30	32	34
Sleeve Length from Center Back	36	36 3/4	37 1/2	38 1/4	39	39 3/4	40 1/2	41 1/4

Body Length at Back: Measured from high point shoulder to finished hem at back.

Chest: Measured across the chest one inch below armhole when laid flat.

Sleeve Length from Center Back: Measure from Center Back neck to shoulder point to sleeve hem.

SPEC SHEET + MEASUREMENTS

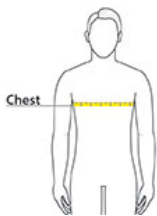


CornerStone® ANSI 107 Class 3 Waterproof Ripstop 3-In-1 Parka. CSJ502

SIZE CHARTS

	S	M	L	XL	2XL	3XL	4XL	5XL
Chest	35-37	38-40	41-43	44-46	47-49	50-53	54-57	58-60

HOW TO MEASURE



CHEST

Measure under the arm and around the fullest part of the chest with arms down, keeping tape horizontal.

COLORS



Safety Yellow