

SPEC SHEET + MEASUREMENTS



CornerStone® Workwear Soft Shell. CSJ70

Product photo



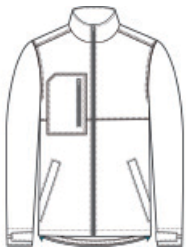
Tough jobs call for tough workwear—and this water-resistant soft shell fits the bill with a roomy fit for easy layering over hoodies and work shirts.

- 100% polyester shell with water-resistant finish bonded to water-resistant film insert and a 100% polyester brushed microfleece lining
- Fabric waterproof rating: 1000MM
- Fabric breathability rating: 1000G/M²
- Triple-needle stitching
- Vertical zippered right chest pocket
- Reinforced front pockets
- Exposed center front zippered closure with longer pull
- Self-fabric adjustable tab cuffs with hook and loop closures
- Adjustable drawcord hem

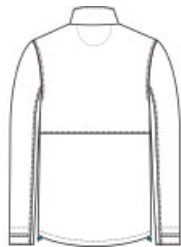
CARE INSTRUCTIONS

Machine Wash Cold. Only Non-Chlorine Bleach, When Needed. Do Not Use Fabric Softener. Tumble Dry Low. Cool Iron, If Necessary. Do Not Dry Clean.

Sketches



front



back

SPEC SHEET + MEASUREMENTS



CornerStone® Workwear Soft Shell. CSJ70

PRODUCT MEASUREMENTS

	XS	S	M	L	XL	2XL	3XL	4XL
Body Length at Back	28	29	30	31	32	33	33 1/2	34
Chest	20 1/2	22	23 1/2	25	26 1/2	28	30	32
Sleeve Length from Center Back	35 1/8	35 3/4	36 3/8	37	37 5/8	38 1/4	39	39 3/4

Body Length at Back: Measured from high point shoulder to finished hem at back.

Chest: Measured across the chest one inch below armhole when laid flat.

Sleeve Length from Center Back: Measure from Center Back neck to shoulder point to sleeve hem.

SIZE CHARTS

	XS	S	M	L	XL	2XL	3XL	4XL
Chest	32-34	35-37	38-40	41-43	44-46	47-49	50-53	54-57

SPEC SHEET + MEASUREMENTS



CornerStone[®] Workwear Soft Shell. CSJ70

HOW TO MEASURE



CHEST

Measure under the arm and around the fullest part of the chest with arms down, keeping tape horizontal.

COLORS



Black
PMS BLACK
C



Iron Grey
PMS 7540C



Navy
PMS 532C