

SPEC SHEET + MEASUREMENTS



Carhartt® Full Swing® Cryder Jacket. CT102207

Product photo



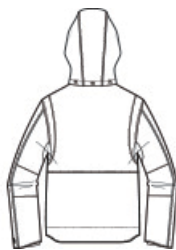
When you're bucking hay or swinging a framing hammer, you need a jacket that gives you freedom to move. Stretch panels on the back, sides and elbows allow for a full range of motion when you're on the job.

- 8.25 ounce, 59/39/2 cotton/polyester/spandex Quick Duck® canvas
- 80 gram 3M™ Thinsulate™ insulation for warmth
- Rain Defender® durable water repellent
- 30% lighter but ounce-for-ounce as durable as sandstone
- Rugged Flex® durable stretch technology for ease of movement
- Mighty Back® Bi-Swing between shoulders for instant recovery
- Flex Elbow™ for less restriction
- Freedom Gussets under arms
- Mock neck collar with zip-through and detachable hood
- Two-way center front zipper with inner storm flap
- Two zippered chest pockets
- Two lower hand pockets with hidden snap closures
- Inner sleeve storm cuffs
- Angled cuff openings
- Drawcord adjustable hem
- Drop tail
- Carhartt-strong, triple-stitched main seams
- Carhartt label sewn on chest pocket
- Loose fit

Sketches



front



back

CARE INSTRUCTIONS

Wash and dry inside out with like colors, Machine wash cold, Do not bleach, Tumble dry low, Do not use fabric softeners, Do not iron, Do not dry clean,

PRODUCT MEASUREMENTS

	S	M	L	XL	2XL	3XL	4XL
Body Length at Back	28 1/2	29 1/2	29 1/2	30 1/2	30 1/2	31 1/2	31 1/2
Chest	23	25	27	29	31	33	35
Sleeve Length from Center Back	35 2/3	36 3/4	37 3/8	38	38 5/8	39 1/8	39 5/8

Body Length at Back: Measured from high point shoulder to finished hem at back.

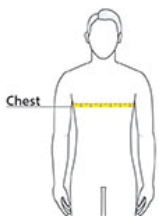
Chest: Measured across the chest one inch below armhole when laid flat.

Sleeve Length from Center Back: Measure from Center Back neck to shoulder point to sleeve hem.

SIZE CHARTS

	S	M	L	XL	2XL	3XL
Chest	34-36	38-40	42-44	46-48	50-52	54-56

HOW TO MEASURE



CHEST

Measure under the arm and around the fullest part of the chest with arms down, keeping tape horizontal.