

SPEC SHEET + MEASUREMENTS



Carhartt® Sherpa-Lined Coat. CT104293

Product photo



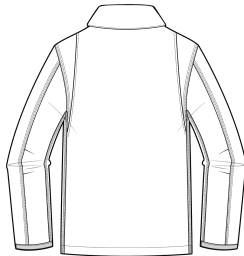
Classic Carhartt style meets Carhartt durability in this coat which features our signature cotton duck fabric for a tough exterior and a soft sherpa lining for warmth and comfort.

- 12-ounce, 100% ring spun cotton washed duck
- 100% polyester filling
- Sherpa-lined body for warmth
- Quilted-nylon lined sleeves for easy on-and-off
- Under-collar snaps for optional hood (sold separately)
- Pleated bi-swing back for additional range of motion
- Left chest pocket with zipper closure
- Two interior pockets
- Two large, sherpa-lined handwarming front pockets
- Interior rib knit storm cuffs help keep out the cold
- Carhartt-strong, triple-stitched main seams for added durability
- Carhartt label sewn on left pocket
- Loose fit

Sketches



front



back

CARE INSTRUCTIONS

Machine Wash Warm Separately. Do Not Bleach. Tumble Dry Low. Do Not Iron Ornamentation. Steam Iron Shell Only.

SPEC SHEET + MEASUREMENTS



Carhartt® Sherpa-Lined Coat. CT104293

PRODUCT MEASUREMENTS

	S	M	L	XL	2XL	3XL	4XL
Body Length at Back	30	31	31	32	32	33	33
Chest	23 1/4	25 1/4	27 1/4	29 1/4	31 1/4	33 1/4	35 1/4
Sleeve Length from Center Back	35 1/2	36 1/2	37 1/8	37 3/4	38 3/8	38 7/8	39 3/8

Body Length at Back: Measured from high point shoulder to finished hem at back.

Chest: Measured across the chest one inch below armhole when laid flat.

Sleeve Length from Center Back: Measure from Center Back neck to shoulder point to sleeve hem.

SIZE CHARTS

	S	M	L	XL	2XL	3XL	4XL
Chest	34-36	38-40	42-44	46-48	50-52	54-56	58-60

SPEC SHEET + MEASUREMENTS



Carhartt® Sherpa-Lined Coat. CT104293

HOW TO MEASURE



CHEST

Measure under the arm and around the fullest part of the chest with arms down, keeping tape horizontal.

COLORS



Black
PMS BLACK
C



Carhartt
Brown
PMS 463C



Gravel
PMS 11C