

# SPEC SHEET + MEASUREMENTS



## Carhartt® Loose-Fit Work Dungaree. CTB13

### Product photo



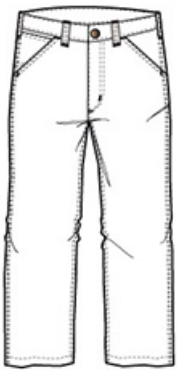
All the things you need in a work jean: toughness, utility and versatility. Cut for comfort for a long day on the job.

- 11.75-ounce, 100% cotton washed denim
- Sits slightly above the waist
- Generous fit through the seat and thigh with the most room to move
- Multiple tool and utility pockets
- Left-leg hammer loop
- Stronger sewn-on-seam belt loops
- Heavy hauling reinforced back pockets
- Straight leg opening fits over boots
- Carhartt leatherette label sewn on right rear pocket
- Loose fit

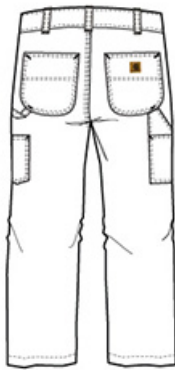
### CARE INSTRUCTIONS

Machine wash warm with like colors, Do not bleach, Tumble dry medium remove promptly, Do not iron ornamentation.

### Sketches



front



back