

SPEC SHEET + MEASUREMENTS



District® Perfect Tri® French Terry Hoodie. DT355

Product photo



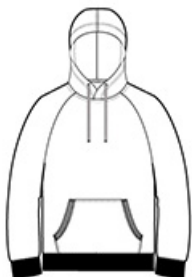
Combining casual ease with the softness of our perfect tri blend.

- 7.1-ounce (240 GSM)
- 61/31/8 ring spun cotton/polyester/rayon French terry
- Tear-away label
- Unlined hood
- Natural drawcords and back neck tape
- Front pouch pocket
- 1x1 rib knit cuffs and hem

CARE INSTRUCTIONS

Machine wash cold with like colors, only non-chlorine bleach when needed, tumble dry low, warm iron if necessary.

Sketches



front



back

SPEC SHEET + MEASUREMENTS



District® Perfect Tri® French Terry Hoodie. DT355

PRODUCT MEASUREMENTS

| | XS | S | M | L | XL | 2XL | 3XL | 4XL |
|----------------------|--------|--------|--------|--------|--------|--------|--------|--------|
| Body Length at Front | 26 1/2 | 27 1/2 | 28 1/2 | 29 1/2 | 30 1/2 | 31 1/2 | 32 | 32 1/2 |
| Chest | 18 1/2 | 20 | 21 1/2 | 23 | 24 1/2 | 26 | 28 | 30 |
| Sleeve Length | 34 1/4 | 35 | 35 3/4 | 36 1/2 | 37 1/4 | 38 | 38 3/4 | 39 1/2 |

Body Length at Front: Measure from high point shoulder to lowest point of hem at front.

Chest: Measured across the chest one inch below armhole when laid flat.

Sleeve Length: Start at center of neck and measure down shoulder, down sleeve to hem.

SIZE CHARTS

| | XS | S | M | L | XL | 2XL | 3XL | 4XL |
|-------|-------|-------|-------|-------|-------|-------|-------|-------|
| Chest | 32-34 | 35-37 | 38-40 | 41-43 | 44-46 | 47-49 | 50-53 | 54-57 |

HOW TO MEASURE



CHEST

Measure under the arm and around the fullest part of the chest with arms down, keeping tape horizontal.

SPEC SHEET + MEASUREMENTS



District® Perfect Tri® French Terry Hoodie. DT355

COLORS



Black
PMS BLACK
C



Grey Frost
PMS COOL
GREY 11C

Light Heather
Grey



New Navy
PMS 533C