

# SPEC SHEET + MEASUREMENTS

*Eddie Bauer*

Eddie Bauer® Women's Smooth Fleece 1/2-Zip. EB237

## Product photo



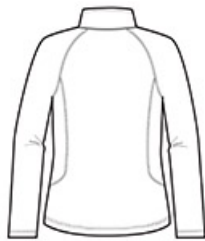
Built for versatility, this smooth-faced, brushed back fleece is the ideal base layer. It has a sleek, low-profile fit and is adaptable to everything from outdoor adventures to indoor comfort.

- 5.6-ounce, 100% polyester fleece
- Contrast coverstitch details
- Reverse coil zippers
- Open cuffs and hem
- Contrast heat transfer Eddie Bauer logo on right hem

## Sketches



front



back

## PRODUCT MEASUREMENTS

---

	XS	S	M	L	XL	2XL	3XL	4XL
Body Length at Back	25 3/4	26 3/8	27	27 5/8	28 1/4	28 7/8	29 1/2	30 1/8
Bust	17 1/4	18 1/4	19 1/4	20 3/4	22 1/4	23 3/4	25 3/4	27 3/4
Size	2	4/6	8/10	12/14	16/18	20/22	24/26	28/30
Sleeve Length from Center Back	31 1/2	32	32 1/2	33 1/8	33 3/4	34 3/8	34 3/4	35 1/8

**Body Length at Back:** Measured from high point shoulder to finished hem at back.

**Bust:** Measured across the chest one inch below armhole when laid flat.

**Sleeve Length from Center Back:** Measure from Center Back neck to shoulder point to sleeve hem.

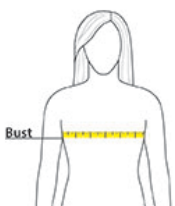
## SIZE CHARTS

---

	XS	S	M	L	XL	2XL	3XL	4XL
Bust	32-33	34-35	36-37	38-40	41-43	44-46	47-49	50-52
Size	2	4/6	8/10	12/14	16/18	20/22	24/26	28/30

## HOW TO MEASURE

---



### BUST

Measure under the arm and around the fullest part of the bust with arms down, keeping tape horizontal.