

# SPEC SHEET + MEASUREMENTS

*Eddie Bauer*

Eddie Bauer® Women's Smooth Fleece Full-Zip. EB247

## Product photo



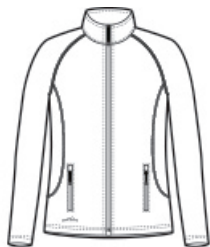
Built for versatility, this smooth-faced, brushed back fleece is the ideal base layer. It has a sleek, low-profile fit and is adaptable to everything from outdoor adventures to indoor comfort.

- 5.6-ounce, 100% polyester fleece
- Contrast coverstitch details
- Reverse coil zippers
- Open cuffs and hem
- Front zippered pockets
- Contrast heat transfer Eddie Bauer logo on right hem

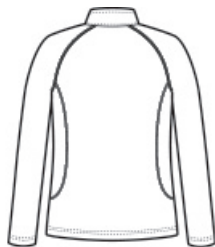
## CARE INSTRUCTIONS

Machine Wash Cold, Inside Out With Like Colors, Do Not Use Fabric Softener, Only Non-Chlorine Bleach When Needed, Tumble Dry Low, Do Not Iron, Do Not Dry Clean.

## Sketches



front



back

## PRODUCT MEASUREMENTS

---

	XS	S	M	L	XL	2XL	3XL	4XL
Body Length at Back	26 1/2	27	27 1/2	28	28 1/2	29	29 1/2	30
Bust	17 1/4	18 1/4	19 1/4	20 3/4	22 1/4	23 3/4	25 3/4	27 3/4
Sleeve	32	32 1/2	33	33 5/8	34 1/4	34 7/8	35 1/4	35 5/8

---

**Body Length at Back:** Measured from high point shoulder to finished hem at back.

**Bust:** Measured across the chest one inch below armhole when laid flat.

**Sleeve:** Measure from Center Back neck to shoulder point to sleeve hem.

## SIZE CHARTS

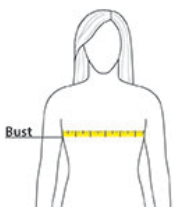
---

	XS	S	M	L	XL	2XL	3XL	4XL
Bust	32-33	34-35	36-37	38-40	41-43	44-46	47-49	50-52
Size	2	4/6	8/10	12/14	16/18	20/22	24/26	28/30

---

## HOW TO MEASURE

---



### BUST

Measure under the arm and around the fullest part of the bust with arms down, keeping tape horizontal.