

# SPEC SHEET + MEASUREMENTS



## Eddie Bauer® Hooded Soft Shell Parka. EB536

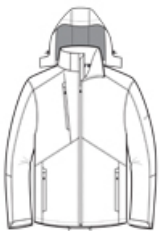
### Product photo



This longer-length parka offers water protection and breathability thanks to a 3K/3K fabric. A detachable hood and articulated sleeves make this parka a cold-weather must-have.

- 96/4 poly/spandex shell bonded to a water-resistant laminated film and 100% polyester microfleece interior
- 3000MM fabric water protection rating
- 3000G/M<sup>2</sup> fabric breathability rating
- Two-way stretch
- Interior storm flap
- Chin guard
- Reverse coil zippers
- Front zippered pockets
- Adjustable tab cuffs with hook and loop closures
- Open hem with locking drawcords
- Reverse coil zippered chest pocket
- Contrast heat transfer Eddie Bauer logo on left sleeve

### Sketches



front



back

### CARE INSTRUCTIONS

Machine wash cold. Only non-chlorine bleach when needed. Tumble dry low. Cool iron if necessary. Do not dry clean.

# SPEC SHEET + MEASUREMENTS



Eddie Bauer® Hooded Soft Shell Parka. EB536

## PRODUCT MEASUREMENTS

	XS	S	M	L	XL	2XL	3XL	4XL
Chest	20	21 1/2	23	24 1/2	26	27 1/2	29 1/2	31 1/2
Body Length at Back	28 1/4	29 1/4	30 3/8	31 1/2	32 5/8	33 3/4	34 3/8	35
Sleeve Length	35 1/4	36	36 3/4	37 1/2	38 1/4	39	39 3/4	40 1/2

**Chest:** Measured across the chest one inch below armhole when laid flat.

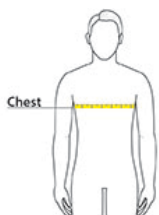
**Body Length at Back:** Measured from high point shoulder to finished hem at back.

**Sleeve Length:** Start at center of neck and measure down shoulder, down sleeve to hem.

## SIZE CHARTS

	XS	S	M	L	XL	2XL	3XL	4XL
Chest	32-34	35-37	38-40	41-43	44-46	47-49	50-53	54-57

## HOW TO MEASURE



### CHEST

Measure under the arm and around the fullest part of the chest with arms down, keeping tape horizontal.

# SPEC SHEET + MEASUREMENTS



Eddie Bauer® Hooded Soft Shell Parka. EB536

## COLORS

---



Admiral Blue  
PMS 534C



Black  
PMS BLACK  
C



Grey Steel  
PMS 7540C