

## SPEC SHEET + MEASUREMENTS



### Eddie Bauer® Women's Trail Soft Shell Jacket. EB543

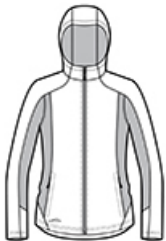
#### Product photo



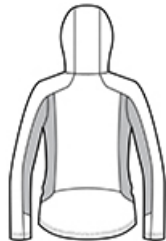
With 3K/3K waterproof and breathability fabric ratings, this knit soft shell has stretch for ease of movement and transitions from the workday streets to the weekend trails—regardless of the forecast. Exclusive StormRepel® durable water-repellent (DWR) technology keeps you warmer and drier.

- 100% polyester knit shell with DWR coating bonded to a water-resistant laminated film insert
- 100% polyester brushed microfleece interior
- StormRepel® durable water-repellent (DWR) technology
- Attached hood
- Princess seams
- Front tricot-lined zippered pockets
- Reverse coil zippers
- Open cuffs and open hem
- Decoration access pocket
- Reflective heat transfer Eddie Bauer logo on right hem

#### Sketches



front



back

# SPEC SHEET + MEASUREMENTS



## Eddie Bauer® Women's Trail Soft Shell Jacket. EB543

### PRODUCT MEASUREMENTS

	XS	S	M	L	XL	2XL	3XL	4XL
Size	2	4/6	8/10	12/14	16/18	20/22	24/26	28/30
Bust	17 1/2	18 1/2	19 1/2	21	22 1/2	24	26	28
Body Length at Back	27	27 1/2	28	28 1/2	29	29 1/2	30	30 1/2
Sleeve Length	32	32 1/2	33	33 5/8	34 1/4	34 7/8	35 1/4	35 5/8

**Bust:** Measured across the chest one inch below armhole when laid flat.

**Body Length at Back:** Measured from high point shoulder to finished hem at back.

**Sleeve Length:** Start at center of neck and measure down shoulder, down sleeve to hem.

### SIZE CHARTS

	XS	S	M	L	XL	2XL	3XL	4XL
Size	2	4/6	8/10	12/14	16/18	20/22	24/26	28/30
Bust	32-33	34-35	36-37	38-40	41-43	44-46	47-49	50-52

# SPEC SHEET + MEASUREMENTS



Eddie Bauer® Women's Trail Soft Shell Jacket. EB543

## HOW TO MEASURE

---



### BUST

Measure under the arm and around the fullest part of the bust with arms down, keeping tape horizontal.

## COLORS

---



Black/ Black  
PMS BLACK  
C



Metal Grey/  
Grey Steel  
PMS 425 C



River Blue  
Navy/ River  
Blue Navy  
PMS 533C