

SPEC SHEET + MEASUREMENTS



Eddie Bauer® Women's Rain Jacket. EB551

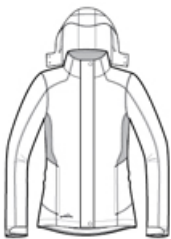
Product photo



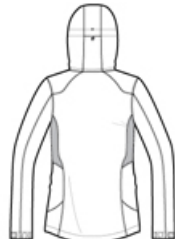
From misty mornings to evening downpours, this fully seam-sealed, completely waterproof colorblock jacket will help keep you dry, warm and protected from whatever Mother Nature throws at you.

- 100% polyester doobby shell, mesh body lining, 100% nylon accents
- Highly waterproof and breathable 5K/5K fabric
- 5000MM fabric water protection rating
- 5000G/M² fabric breathability rating
- Detachable hood with locking drawcord for adjustability
- Exterior storm flap with hook and loop closures
- Front Vislon® zippered pockets
- Adjustable tab cuffs with hook and loop closures
- Open hem with locking drawcord
- Decoration access pocket
- Contrast embroidered Eddie Bauer logo on right hem
- Embroidered WeatherEdge® logo on left sleeve indicates reliable waterproofing and breathable technology

Sketches



front



back

CARE INSTRUCTIONS

MACHINE WASH COLD WITH LIKE COLORS GENTLE CYCLE, TUMBLE DRY LOW DO NOT BLEACH DO NOT DRY CLEAN COOL IRON IF NEEDED

SPEC SHEET + MEASUREMENTS



Eddie Bauer® Women's Rain Jacket. EB551

PRODUCT MEASUREMENTS

	XS	S	M	L	XL	2XL	3XL	4XL
Chest	19	20	21	22 1/2	24	25 1/2	27 1/2	29 1/2
Sleeve Length	32 3/4	33 1/4	33 3/4	34 1/2	35 1/4	36	36 1/2	37
Body Length at Back	27	27 1/2	28	29	30	31	31 1/2	32

Chest: Measured across the chest one inch below armhole when laid flat.

Sleeve Length: Start at center of neck and measure down shoulder, down sleeve to hem.

Body Length at Back: Measured from high point shoulder to finished hem at back.

SIZE CHARTS

	XS	S	M	L	XL	2XL	3XL	4XL
Size	2	4/6	8/10	12/14	16/18	20/22	24/26	28/30
Bust	32-33	34-35	36-37	38-40	41-43	44-46	47-49	50-52

SPEC SHEET + MEASUREMENTS



Eddie Bauer® Women's Rain Jacket. EB551

HOW TO MEASURE



BUST

Measure under the arm and around the fullest part of the bust with arms down, keeping tape horizontal.

COLORS



Black/ Steel
Grey
PMS BLACK
C



Deep Sea
Blue