

# SPEC SHEET + MEASUREMENTS

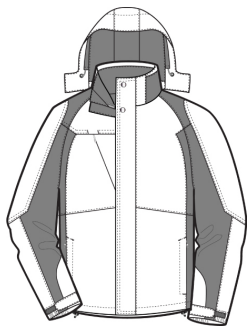
PORT AUTHORITY.

## Port Authority® Ranger 3-in-1 Jacket. J310

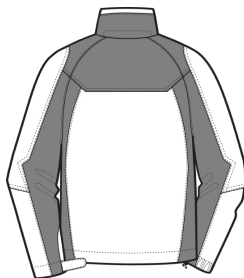
### Product photo



### Sketches



front



back

This jacket offers three great jackets to meet any weather challenge. The plush microfleece jacket is perfect on cool days; the critically seam-sealed, waterproof shell on rainy days; or combine the two for more protection.

- 100% polyester shell
- 100% polyester lining
- 100% polyester microfleece inner jacket
- 3000MM fabric waterproof rating
- 3000G/M<sup>2</sup> fabric breathability rating
- Critically seam-sealed for added waterproof protection
- Detachable hood with adjustable self-fabric tab, drawcord and toggles
- Full-length Interior storm flap
- Full-length exterior storm flap with hook and loop and snap closures
- Two-way Vislon® zipper
- Angled zippered chest pocket
- Interior pocket
- Front zippered pockets
- Half elastic, half self-fabric adjustable tab cuffs with hook and loop closures
- Port Pocket™ for decoration access
- 100% polyester microfleece inner jacket has an anti-pill finish and front zippered pockets
- Open hem with drawcord and toggles for adjustability

### CARE INSTRUCTIONS

# SPEC SHEET + MEASUREMENTS

PORT AUTHORITY

## Port Authority® Ranger 3-in-1 Jacket. J310

Machine was cold on gentle cycle with like colors. Use mild detergent. Remove immediately. Do not allow to lay on itself when wet. Tumble dry low. Cool iron if needed. Do not dry clean.

### PRODUCT MEASUREMENTS

	XS	S	M	L	XL	2XL	3XL	4XL
Chest	20 3/4	22 1/4	23 3/4	25 1/4	26 3/4	28 1/4	30 1/4	32 1/2
Sleeve Length	34 1/4	35	35 3/4	36 1/2	37 1/4	38	38 3/4	39 1/2
Body Length at Back	30	31	32	33	34	35	35 1/2	36

- Chest:** Measured across the chest one inch below armhole when laid flat.
- Sleeve Length:** Start at center of neck and measure down shoulder, down sleeve to hem.
- Body Length at Back:** Measured from high point shoulder to finished hem at back.

### SIZE CHARTS

	XS	S	M	L	XL	2XL	3XL	4XL
Chest Size (inches)	32-34	35-37	38-40	41-43	44-46	47-49	50-53	54-57

# SPEC SHEET + MEASUREMENTS

PORT AUTHORITY.

Port Authority® Ranger 3-in-1 Jacket. J310

## HOW TO MEASURE

---



### CHEST

Measure under the arm and around the fullest part of the chest with arms down, keeping tape horizontal.

## COLORS

---



Black/ Ink  
Grey  
PMS BLACK  
C



Insignia Blue/  
Navy Eclipse  
PMS 2378C