

SPEC SHEET + MEASUREMENTS

PORT AUTHORITY.

Port Authority® Challenger™ Vest. J355

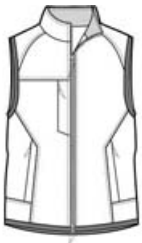
Product photo



The versatile Challenger™ Vest has spandex-trimmed armholes and hem for long-wearing durability.

- 100% Teklon® nylon shell
- 8.3-ounce, 100% polyester fleece lining
- Double-needle stitching throughout
- Slash zippered pockets
- Port Pocket™ for easy embroidery access
- Binding at armholes and hem

Sketches



front



back

SPEC SHEET + MEASUREMENTS

PORT AUTHORITY

Port Authority® Challenger™ Vest. J355

PRODUCT MEASUREMENTS

	XS	S	M	L	XL	2XL	3XL	4XL
Body Length at Back	28	28 1/2	29	29 1/2	30 1/2	31 1/2	32	32 1/2
Chest	20 1/2	22	23 1/2	25	26 1/2	28	30	32

Body Length at Back: Measured from high point shoulder to finished hem at back.

Chest: Measured across the chest one inch below armhole when laid flat.

SIZE CHARTS

	XS	S	M	L	XL	2XL	3XL	4XL	5XL	6XL	7XL	8XL	9XL	10XL
Chest	32-34	35-37	38-40	41-43	44-46	47-49	50-52	54-57	58-60	61-63	64-66	67-69	70-72	73-75

HOW TO MEASURE



CHEST

Measure under the arm and around the fullest part of the chest with arms down, keeping tape horizontal.

SPEC SHEET + MEASUREMENTS

PORT AUTHORITY.

Port Authority® Challenger™ Vest. J355

COLORS



True Hunter/
True Black
PMS 446 C