

# SPEC SHEET + MEASUREMENTS

PORT AUTHORITY

## Port Authority® Horizon Puffy Jacket. J364

### Product photo



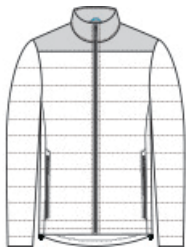
With horizontal baffles, a slight sheen and insulation that simulates down feathers, this is the newest puffy on the horizon. A water-resistant finish helps keep light rain out. •

- 100% polyester shell and lining
- 90/10 polyester/spandex woven overlay on shoulders
- Molded center front zipper
- Elastic cuffs
- Port Pocket™ for decoration access
- Molded zippered hand pockets
- Insulation method: 10.4-oz. polyfill
- Water protection method: water-resistant finish on shell, PU coating on lining

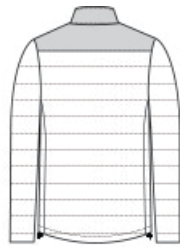
### CARE INSTRUCTIONS

Machine Wash Cold With Like Colors Or Separate. Do Not Use Fabric Softener. Only Non-Chlorine Bleach When Needed. Tumble Dry Low. Cool Iron If Necessary.

### Sketches



front



back

# SPEC SHEET + MEASUREMENTS

PORT AUTHORITY

Port Authority® Horizon Puffy Jacket. J364

## PRODUCT MEASUREMENTS

	XS	S	M	L	XL	2XL	3XL	4XL
Body Length at Back	27 1/2	28 1/2	29 1/2	30 1/2	31 1/2	32 1/2	33	33 1/2
Chest	20 1/2	22	23 1/2	25	26 1/2	28	30	32
Sleeve Length from Center Back	34 1/4	35	35 3/4	36 1/2	37 1/4	38	38 3/4	39 1/2

**Body Length at Back:** Measured from high point shoulder to finished hem at back.

**Chest:** Measured across the chest one inch below armhole when laid flat.

**Sleeve Length from Center Back:** Measure from Center Back neck to shoulder point to sleeve hem.

## SIZE CHARTS

	XS	S	M	L	XL	2XL	3XL	4XL
Chest	32-34	35-37	38-40	41-43	44-46	47-49	50-53	54-57

# SPEC SHEET + MEASUREMENTS

PORT AUTHORITY

Port Authority® Horizon Puffy Jacket. J364

## HOW TO MEASURE



### CHEST

Measure under the arm and around the fullest part of the chest with arms down, keeping tape horizontal.

## COLORS



Deep Black  
PMS Black C



Deep Smoke/  
Grey Smoke  
PMS 425C



Dress Blue  
Navy  
PMS 533C



True Blue/  
Deep Black  
PMS 654C