

SPEC SHEET + MEASUREMENTS

PORT AUTHORITY.

Port Authority® Mechanic Soft Shell Jacket. J417

Product photo



A classic style in an updated silhouette, this rugged stretch soft shell has a clean, sophisticated exterior. Wind-resistant, water-repellent performance means it's ideal for outdoor and casual workplaces.

- 100% polyester woven shell bonded to a water-resistant film insert and a 100% polyester microfleece lining
- 1000MM fabric waterproof rating
- 1000G/M² fabric breathability rating
- Water-resistant finish
- Metal center front zipper
- Open hand pockets
- Adjustable snap cuffs and hem
- Rental-friendly

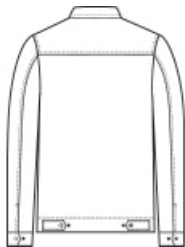
CARE INSTRUCTIONS

Machine Wash Cold With Like Colors. Only Non-Chlorine Bleach When Needed. Tumble Dry Medium. Cool Iron If Necessary.

Sketches



front



back

SPEC SHEET + MEASUREMENTS

PORT AUTHORITY

Port Authority® Mechanic Soft Shell Jacket. J417

PRODUCT MEASUREMENTS

	XS	S	M	L	XL	2XL	3XL	4XL
Body Length at Back	26	27	28	29	30	31	31 1/2	32
Chest	19 1/4	20 3/4	22 1/4	23 3/4	25 1/4	26 3/4	28 3/4	30 3/4
Sleeve Length from Center Back	34 3/4	35 1/2	36 1/4	37	37 3/4	38 1/2	39 1/4	40

Body Length at Back: Measured from high point shoulder to finished hem at back.

Chest: Measured across the chest one inch below armhole when laid flat.

Sleeve Length from Center Back: Measure from Center Back neck to shoulder point to sleeve hem.

SIZE CHARTS

	XS	S	M	L	XL	2XL	3XL	4XL
Chest	32-34	35-37	38-40	41-43	44-46	47-49	50-53	54-57

SPEC SHEET + MEASUREMENTS

PORT AUTHORITY.

Port Authority® Mechanic Soft Shell Jacket. J417

HOW TO MEASURE



CHEST

Measure under the arm and around the fullest part of the chest with arms down, keeping tape horizontal.

COLORS



Black
PMS BLACK
C



Deep Smoke
PMS 425C



Dress Blue
Navy
PMS 533C