

SPEC SHEET + MEASUREMENTS

PORT AUTHORITY.

Port Authority® Active Colorblock Soft Shell Jacket. J718

Product photo



When it's time to get active, this soft shell won't back down. With modern colorblocking on the collar, shoulders and sleeves, this budget-friendly jacket performs with wind- and water-resistance and easy-moving stretch.

- 100% polyester knit shell bonded to a water-resistant film insert and a 100% polyester mesh interior
- 1000MM fabric waterproof rating
- 1000G/M² fabric breathability rating
- Full-length interior storm flap with chin guard
- Reverse coil center front zipper
- Front zippered pockets
- Elastic binding at cuffs
- Open hem with adjustable locking drawcord

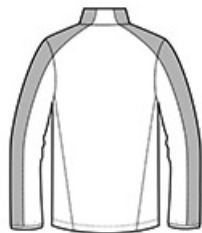
CARE INSTRUCTIONS

Machine wash cold. Gentle cycle. Tumble dry low. Cool iron if needed. Do not bleach. Do not dry clean.

Sketches



front



back

SPEC SHEET + MEASUREMENTS

PORT AUTHORITY

Port Authority® Active Colorblock Soft Shell Jacket. J718

PRODUCT MEASUREMENTS

| | XS | S | M | L | XL | 2XL | 3XL | 4XL |
|--------------------------------|--------|--------|--------|--------|--------|--------|--------|--------|
| Body Length at Back | 28 | 29 | 30 | 31 | 32 | 33 | 33 1/2 | 34 |
| Chest | 19 3/4 | 21 1/4 | 22 3/4 | 24 1/4 | 25 3/4 | 27 1/4 | 29 1/4 | 31 1/4 |
| Sleeve Length from Center Back | 35 1/4 | 36 | 36 3/4 | 37 1/2 | 38 1/4 | 39 | 39 3/4 | 40 1/2 |

Body Length at Back: Measured from high point shoulder to finished hem at back.

Chest: Measured across the chest one inch below armhole when laid flat.

Sleeve Length from Center Back: Measure from Center Back neck to shoulder point to sleeve hem.

SIZE CHARTS

| | XS | S | M | L | XL | 2XL | 3XL | 4XL |
|-------|-------|-------|-------|-------|-------|-------|-------|-------|
| Chest | 32-34 | 35-37 | 38-40 | 41-43 | 44-46 | 47-49 | 50-53 | 54-57 |

SPEC SHEET + MEASUREMENTS

PORT AUTHORITY.

Port Authority® Active Colorblock Soft Shell Jacket. J718

HOW TO MEASURE



CHEST

Measure under the arm and around the fullest part of the chest with arms down, keeping tape horizontal.