

SPEC SHEET + MEASUREMENTS

PORT AUTHORITY.

Port Authority® Active Hooded Soft Shell Jacket. J719

Product photo



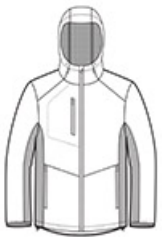
Enjoy active pursuits in this flexible, wind-resistant, water-resistant, budget-friendly jacket that features a hood for true all-season performance.

- 100% polyester knit shell bonded to a water-resistant film insert and a 100% polyester mesh interior
- 1000MM fabric waterproof rating
- 1000G/M² fabric breathability rating
- Three-panel hood with adjustable locking drawcord
- Reverse coil center front zipper
- Zippered chest pocket
- Front zippered pockets
- Elastic binding at cuffs
- Open hem with adjustable locking drawcord

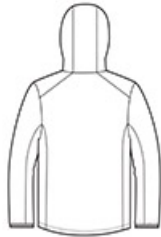
CARE INSTRUCTIONS

Machine wash cold. Gentle cycle. Tumble dry low. Cool iron if needed. Do not bleach. Do not dry clean.

Sketches



front



back

PRODUCT MEASUREMENTS

	XS	S	M	L	XL	2XL	3XL	4XL
Body Length at Back	28	29	30	31	32	33	33 1/2	34
Chest	19 1/2	21	22 1/2	24	25 1/2	27	29	31
Sleeve Length from Center Back	35 1/4	36	36 3/4	37 1/2	38 1/4	39	39 3/4	40 1/2

Body Length at Back: Measured from high point shoulder to finished hem at back.

Chest: Measured across the chest one inch below armhole when laid flat.

Sleeve Length from Center Back: Measure from Center Back neck to shoulder point to sleeve hem.

SIZE CHARTS

	XS	S	M	L	XL	2XL	3XL	4XL
Chest	32-34	35-37	38-40	41-43	44-46	47-49	50-53	54-57

HOW TO MEASURE



CHEST

Measure under the arm and around the fullest part of the chest with arms down, keeping tape horizontal.

COLORS



Deep Black
PMS BLACK C



Dress Blue
Navy
PMS 533C



Grey Steel/
Deep Black
PMS 7540 C



True Royal/
Deep Black
PMS 7687 C