

# SPEC SHEET + MEASUREMENTS

PORT AUTHORITY.

## Port Authority® Collective Soft Shell Jacket. J901

### Product photo



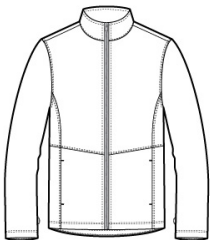
With a subtle mini ripstop texture, this stretch soft shell has double-needle stitching throughout and sleek design lines. The water-resistant film and DWR finish combine to resist wind and rain for weather protection.

- Can be zipped in and secured by snap attachments inside an outer layer
- 94/6 poly/spandex woven mini ripstop with a DWR finish bonded to a water-resistant film insert and a 100% polyester brushed tricot interior
- 8000MM fabric waterproof rating
- 5000G/M<sup>2</sup> fabric breathability rating
- Slightly longer length
- Molded center front zipper
- Front reverse-coil zippered covered pockets

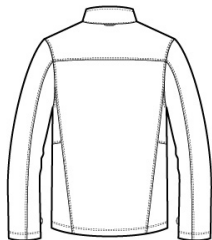
### CARE INSTRUCTIONS

Machine wash cold with like colors; do not use fabric softener; tumble dry low; remove promptly; only non-chlorine bleach when needed; cool iron if necessary; do not dry clean.

### Sketches



front



back

# SPEC SHEET + MEASUREMENTS

PORT AUTHORITY

Port Authority® Collective Soft Shell Jacket. J901

## PRODUCT MEASUREMENTS

	XS	S	M	L	XL	2XL	3XL	4XL
Body Length at Front	27 1/2	28 1/2	29 1/2	30 1/2	31 1/2	32 1/2	33	33 1/2
Chest	19 1/2	21	22 1/2	24	25 1/2	27	29	31
Sleeve Length	34 3/4	35 1/2	36 1/4	37	37 3/4	38 1/2	39 1/4	40

**Body Length at Front:** Measure from high point shoulder to lowest point of hem at front.

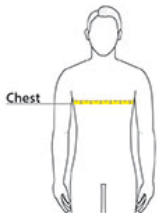
**Chest:** Measured across the chest one inch below armhole when laid flat.

**Sleeve Length:** Start at center of neck and measure down shoulder, down sleeve to hem.

## SIZE CHARTS

	XS	S	M	L	XL	2XL	3XL	4XL
Chest	32-34	35-37	38-40	41-43	44-46	47-49	50-53	54-57

## HOW TO MEASURE



### CHEST

Measure under the arm and around the fullest part of the chest with arms down, keeping tape horizontal.

# SPEC SHEET + MEASUREMENTS

PORT AUTHORITY.

Port Authority® Collective Soft Shell Jacket. J901

## COLORS

				
Deep Black PMS BLACK C	Graphite PMS 7540C	Gusty Grey PMS COOL GRAY 8C	Night Sky Blue PMS 654C	River Blue Navy PMS 533C