

SPEC SHEET + MEASUREMENTS

SPORT-TEK

Sport-Tek® Embossed Hooded Wind Jacket. JST53

Product photo



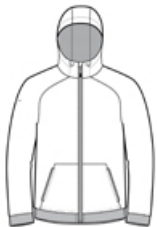
This wind-resistant, water-repellent jacket delivers powerful performance and features an embossed geometric pattern and reflective details for an unrivaled look.

- 100% polyester embossed woven body
- 100% polyester mesh body and hood lining
- 100% polyester woven sleeve lining
- Three-panel hood with drawcord and toggles
- Tag-free label
- Raglan sleeves
- Reverse coil zipper
- Reflective details on right sleeve and lower back
- Decoration access pocket
- Elastic trim at cuffs and hem
- Front zippered pockets

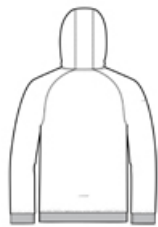
CARE INSTRUCTIONS

Machine wash cold gentle cycle with like colors. Use mild detergent. Remove immediately. Do not allow to lay on itself when wet. Do not bleach. Tumble dry low. Cool iron if needed. Do not dry clean

Sketches



front



back

SPEC SHEET + MEASUREMENTS

SPORT-TEK

Sport-Tek® Embossed Hooded Wind Jacket. JST53

PRODUCT MEASUREMENTS

	XS	S	M	L	XL	2XL	3XL	4XL
Body Length at Back	26	27	28	29	30	31	31 1/2	32
Chest	20	21 1/2	23	24 1/2	26	27 1/2	29 1/2	31 1/2
Sleeve Length	35 1/4	36	36 3/4	37 1/2	38 1/4	39	39 3/4	40 1/2

Body Length at Back: Measured from high point shoulder to finished hem at back.

Chest: Measured across the chest one inch below armhole when laid flat.

Sleeve Length: Start at center of neck and measure down shoulder, down sleeve to hem.

SIZE CHARTS

	XS	S	M	L	XL	2XL	3XL	4XL
Chest	32-34	35-37	38-40	41-43	44-46	47-49	50-53	54-57

HOW TO MEASURE



CHEST

Measure under the arm and around the fullest part of the chest with arms down, keeping tape horizontal.