

SPEC SHEET + MEASUREMENTS

SPORT-TEK

Sport-Tek® Insulated Letterman Jacket. JST82

Product photo



We took the old-school letterman jacket and reworked it in comfortable wool-like polyester with a warm quilted lining. A detachable hood adds versatility.

- 10.6-ounce, 94/4/2 poly/rayon/spandex body
- 9-ounce, 60/40 cotton/poly sleeves and hood
- 100% polyester quilted lining with 2-ounce, 100% polyester fill in body and sleeve
- Tag-free label
- Detachable three-panel hood with dyed-to-match drawcord
- Interior pocket
- Rib knit collar, cuffs and hem
- 2x2 snap front closure
- Front slash pockets
- Decoration access pocket

Please note: This product is transitioning from woven labels to tag-free labels. Your order may contain a combination of both labels.

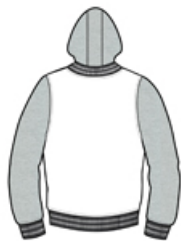
CARE INSTRUCTIONS

Machine wash warm with like colors. Only non-chlorine bleach when needed. Tumble dry low. Warm iron if needed.

Sketches



front



back

SPEC SHEET + MEASUREMENTS



Sport-Tek® Insulated Letterman Jacket. JST82

PRODUCT MEASUREMENTS

| | XS | S | M | L | XL | 2XL | 3XL | 4XL |
|--------------------------------|--------|--------|--------|--------|--------|--------|--------|--------|
| Chest | 20 | 21 1/2 | 23 | 24 1/2 | 26 | 27 1/2 | 29 1/2 | 31 1/2 |
| Sleeve Length from Center Back | 35 1/8 | 35 3/4 | 36 3/8 | 37 | 37 3/4 | 38 1/2 | 39 1/4 | 40 |
| Body Length at Back | 27 | 28 | 29 | 30 | 31 | 32 | 32 1/2 | 33 |

Chest: Measured across the chest one inch below armhole when laid flat.

Sleeve Length from Center Back: Measure from Center Back neck to shoulder point to sleeve hem.

Body Length at Back: Measured from high point shoulder to finished hem at back.

SIZE CHARTS

| | XS | S | M | L | XL | 2XL | 3XL | 4XL |
|-------|-------|-------|-------|-------|-------|-------|-------|-------|
| Chest | 32-34 | 35-37 | 38-40 | 41-43 | 44-46 | 47-49 | 50-53 | 54-57 |

SPEC SHEET + MEASUREMENTS



Sport-Tek[®] Insulated Letterman Jacket. JST82

HOW TO MEASURE



CHEST

Measure under the arm and around the fullest part of the chest with arms down, keeping tape horizontal.

COLORS



Black/ Vintage
Heather
PMS BLACK
C



True Navy/
Vintage
Heather
PMS 533C