

SPEC SHEET + MEASUREMENTS

PORT AUTHORITY.

Port Authority® Ladies R-Tek® Pro Fleece Full-Zip Vest. L228

Product photo



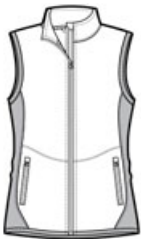
R-Tek® Pro vests are made for warmth and layering--without adding extra bulk--thanks to stretch side panels. Produced using Low Impact Technology (L.I.T.™) which uses less dyestuffs, thermal energy and water for enhanced softness, performance and after-care quality.

- 7.1-ounce, 100% polyester R-Tek® Pro fleece
- 88/12 poly/spandex side panels
- Reverse coil zipper with chin guard
- Front zippered pockets with zipper garages
- Elastic binding at armholes and hem

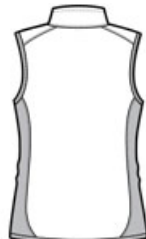
CARE INSTRUCTIONS

Machine wash cold. Gentle cycle with like colors. Non-chlorine bleach when needed. Tumble dry low. Remove promptly. Do not iron.

Sketches



front



back

SPEC SHEET + MEASUREMENTS

PORT AUTHORITY

Port Authority® Ladies R-Tek® Pro Fleece Full-Zip Vest.
L228

PRODUCT MEASUREMENTS

	XS	S	M	L	XL	XXL	3XL	4XL
Body Length at Back	25	25 1/2	26	27	28	29	29 1/2	30
Bust	18	19	20	21 1/2	23	24 1/2	26 1/2	28 1/2
Sleeve Length	n/a	n/a	n/a	n/a	n/a	n/a	n/a	n/a

Body Length at Back: Measured from high point shoulder to finished hem at back.

Bust: Measured across the chest one inch below armhole when laid flat.

Sleeve Length: Start at center of neck and measure down shoulder, down sleeve to hem.

SIZE CHARTS

	XS	S	M	L	XL	XXL	3XL	4XL
Bust	32-34	35-36	37-38	39-41	42-44	45-47	48-51	52-55
Size	2	4/6	8/10	12/14	16/18	20/22	24/26	28/30

SPEC SHEET + MEASUREMENTS

PORT AUTHORITY.

Port Authority® Ladies R-Tek® Pro Fleece Full-Zip Vest.
L228

HOW TO MEASURE



BUST

Measure under the arm and around the fullest part of the bust with arms down, keeping tape horizontal.