

# SPEC SHEET + MEASUREMENTS

PORT AUTHORITY.

Port Authority® Women's Slub Fleece Full-Zip Jacket.

L293

## Product photo



This superb jacket is office-appropriate with its slub texture and thoughtful details. A brushed interior adds warmth, while waist shaping makes for a flattering fit.

- 9-ounce, 65/35 cotton/poly
- Rib knit inside collar
- Twill tape trim at neck
- Front shoulder seaming with back yoke
- Reverse coil zipper
- Rib knit cuffs
- Front pockets
- Open hem

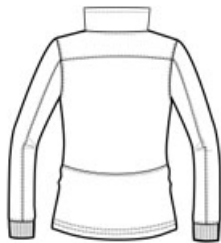
## CARE INSTRUCTIONS

Machine wash cold with like colors. Do not bleach. Tumble dry low. Warm iron if necessary.

## Sketches



front



back

# SPEC SHEET + MEASUREMENTS

PORT AUTHORITY

Port Authority® Women's Slub Fleece Full-Zip Jacket.  
L293

## PRODUCT MEASUREMENTS

	XS	S	M	L	XL	XXL	3XL	4XL
Body Length at Back	26	26 1/2	27	28	29	30	30 1/2	31
Bust	18 1/2	19 1/2	20 1/2	22	23 1/2	25	27	29
Sleeve Length	33	33 1/2	34	34 5/8	35 1/4	35 7/8	36 1/4	36 5/8

**Body Length at Back:** Measured from high point shoulder to finished hem at back.

**Bust:** Measured across the chest one inch below armhole when laid flat.

**Sleeve Length:** Start at center of neck and measure down shoulder, down sleeve to hem.

## SIZE CHARTS

	XS	S	M	L	XL	XXL	3XL	4XL	5XL
Bust	32-34	35-36	37-38	39-41	42-44	45-47	48-51	52-55	56-59
Size	2	4/6	8/10	12/14	16/18	20/22	24/26	28/30	32/34

# SPEC SHEET + MEASUREMENTS

PORT AUTHORITY.

Port Authority® Women's Slub Fleece Full-Zip Jacket.  
L293

## HOW TO MEASURE

---



### BUST

Measure under the arm and around the fullest part of the bust with arms down, keeping tape horizontal.

## COLORS

---



Black  
PMS BLACK  
C



Navy  
PMS 5255C



Slate Grey  
PMS 7540C



Twilight Blue