

SPEC SHEET + MEASUREMENTS

PORT AUTHORITY.

Port Authority® Ladies Zephyr Reflective Hit Full-Zip Jacket. L345

Product photo



With eye-catching reflective hits and colorblocking details, this unlined jacket has a smooth hand along with wind- and water-resistance.

- 100% polyester shell
- Ruching on collar
- Interior wind flap
- Open front pockets
- Elastic binding at cuffs and hem
- Reflective details

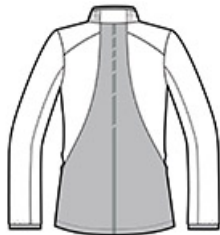
CARE INSTRUCTIONS

Machine wash cold with like colors. Do not bleach or use fabric softener. Tumble dry low. Remove promptly. Do not iron. Do not dry clean.

Sketches



front



back

SPEC SHEET + MEASUREMENTS

PORT AUTHORITY

Port Authority® Ladies Zephyr Reflective Hit Full-Zip Jacket. L345

PRODUCT MEASUREMENTS

	XS	S	M	L	XL	XXL	3XL	4XL
Body Length at Back	26	26 1/2	27	27 1/2	28	28 1/2	29	29 1/2
Bust	18 1/2	19 1/2	20 1/2	22	23 1/2	25	27	29
Size	2	4/6	8/10	12/14	16/18	20/22	24/26	28/30
Sleeve Length from Center Back	32 3/4	33 1/4	33 3/4	34 3/8	35	35 5/8	36	36 3/8

Body Length at Back: Measured from high point shoulder to finished hem at back.

Bust: Measured across the chest one inch below armhole when laid flat.

Sleeve Length from Center Back: Measure from Center Back neck to shoulder point to sleeve hem.

SIZE CHARTS

	XS	S	M	L	XL	XXL	3XL	4XL
Bust	32-34	35-36	37-38	39-41	42-44	45-47	48-51	52-55
Size	2	4/6	8/10	12/14	16/18	20/22	24/26	28/30

SPEC SHEET + MEASUREMENTS

PORT AUTHORITY

Port Authority® Ladies Zephyr Reflective Hit Full-Zip Jacket. L345

HOW TO MEASURE



BUST

Measure under the arm and around the fullest part of the bust with arms down, keeping tape horizontal.