

SPEC SHEET + MEASUREMENTS

PORT AUTHORITY.

Port Authority® Ladies Successor™ Jacket. L701

Product photo



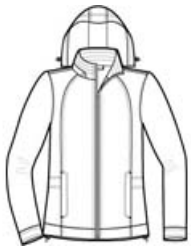
Build the team—or recognize those you depend on—with the Successor™ Jacket. This business-to-casual style has a modern look and a soft, quiet hand. Designed with a zip-off hood, this multitasking jacket is versatile enough for mild wind and rain protection.

- 100% polyester with PU coating
- Polyester lining throughout
- Zip-off hood with drawcord and toggles
- Interior zippered pocket
- Front zippered pockets
- Adjustable snap cuffs
- Open hem with locking drawcords
- Port Pocket™ for easy embroidery access

CARE INSTRUCTIONS

Machine wash cold. Do not bleach or dry clean. Do not tumble dry.

Sketches



front



back

SPEC SHEET + MEASUREMENTS

PORT AUTHORITY

Port Authority® Ladies Successor™ Jacket. L701

PRODUCT MEASUREMENTS

	XS	S	M	L	XL	XXL	3XL	4XL
Body Length at Back	24	25	26	27	28	28 1/2	29	30
Bust	18 1/2	19 1/2	20 1/2	22	23 1/2	25	26 1/2	29
Sleeve Length	31 3/4	32 3/4	33 3/4	34 3/4	35 1/4	36 1/4	36 3/4	36 3/4

Body Length at Back: Measured from high point shoulder to finished hem at back.

Bust: Measured across the chest one inch below armhole when laid flat.

Sleeve Length: Start at center of neck and measure down shoulder, down sleeve to hem.

SIZE CHARTS

	XS	S	M	L	XL	XXL	3XL	4XL	5XL	6XL
Bust	32-34	35-36	37-38	39-41	42-44	45-47	48-51	52-55	56-59	60-63
Size	2	4/6	8/10	12/14	16/18	20/22	24/26	28/30	32/34	36/38

SPEC SHEET + MEASUREMENTS

PORT AUTHORITY.

Port Authority® Ladies Successor™ Jacket. L701

HOW TO MEASURE



BUST

Measure under the arm and around the fullest part of the bust with arms down, keeping tape horizontal.

COLORS



Dark
Chocolate
PMS 412 C



Estate Blue
PMS 534 C



Stone
PMS 454 C