

SPEC SHEET + MEASUREMENTS

PORT AUTHORITY.

Port Authority® Women's Active Colorblock Soft Shell Jacket. L718

Product photo



When it's time to get active, this soft shell won't back down. With modern colorblocking on the collar, shoulders and sleeves, this budget-friendly jacket performs with wind- and water-resistance and easy-moving stretch.

- 100% polyester knit shell bonded to a water-resistant film insert and a 100% polyester mesh interior
- 1000MM fabric waterproof rating
- 1000G/M² fabric breathability rating
- Full-length interior storm flap with chin guard
- Reverse coil center front zipper
- Front zippered pockets
- Elastic binding at cuffs
- Open hem with adjustable locking drawcord

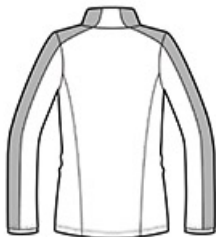
CARE INSTRUCTIONS

Machine wash cold. Gentle cycle. Tumble dry low. Cool iron if needed. Do not bleach. Do not dry clean.

Sketches



front



back

SPEC SHEET + MEASUREMENTS

PORT AUTHORITY

Port Authority® Women's Active Colorblock Soft Shell Jacket. L718

PRODUCT MEASUREMENTS

	XS	S	M	L	XL	XXL	3XL	4XL
Body Length at Back	26 1/2	27	27 1/2	28	28 1/2	29	29 1/2	30
Bust	18 1/4	19 1/4	20 1/4	21 3/4	23 1/4	24 3/4	26 3/4	28 3/4
Size	2	4/6	8/10	12/14	16/18	20/22	24/26	28/30
Sleeve Length from Center Back	32	32 1/2	33	33 5/8	34 1/4	34 7/8	35 1/4	35 5/8

Body Length at Back: Measured from high point shoulder to finished hem at back.

Bust: Measured across the chest one inch below armhole when laid flat.

Sleeve Length from Center Back: Measure from Center Back neck to shoulder point to sleeve hem.

SIZE CHARTS

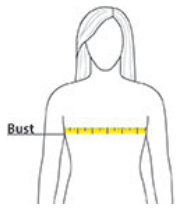
	XS	S	M	L	XL	XXL	3XL	4XL
Bust	32-34	35-36	37-38	39-41	42-44	45-47	48-51	52-55
Size	2	4/6	8/10	12/14	16/18	20/22	24/26	28/30

SPEC SHEET + MEASUREMENTS

PORT AUTHORITY.

Port Authority® Women's Active Colorblock Soft Shell
Jacket. L718

HOW TO MEASURE



BUST

Measure under the arm and around the fullest part of the bust with arms down, keeping tape horizontal.