

SPEC SHEET + MEASUREMENTS

PORT AUTHORITY.

Port Authority® Women's Active Hooded Soft Shell Jacket. L719

Product photo



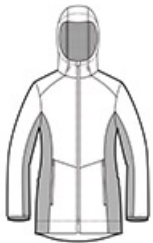
Enjoy active pursuits in this flexible, wind-resistant, water-resistant, budget-friendly jacket that features a hood for true all-season performance.

- 100% polyester knit shell bonded to a water-resistant film insert and a 100% polyester mesh interior
- 1000MM fabric waterproof rating
- 1000G/M² fabric breathability rating
- Longer length for additional coverage
- Three-panel hood with adjustable locking drawcord
- Reverse coil two-way center front zipper
- Front zippered pockets
- Elastic binding at cuffs
- Open drop tail hem

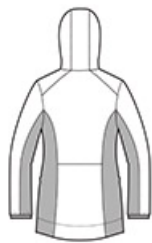
CARE INSTRUCTIONS

Machine wash cold. Gentle cycle. Tumble dry low. Cool iron if needed. Do not bleach. Do not dry clean.

Sketches



front



back

SPEC SHEET + MEASUREMENTS

PORT AUTHORITY

Port Authority® Women's Active Hooded Soft Shell Jacket. L719

PRODUCT MEASUREMENTS

	XS	S	M	L	XL	XXL	3XL	4XL
Size	2	4/6	8/10	12/14	16/18	20/22	24/26	28/30
Bust	18 1/4	19 1/4	20 1/4	21 3/4	23 1/4	24 3/4	26 3/4	28 3/4
Body Length at Back	31 1/2	32	32 1/2	33	33 1/2	34	34 1/2	35
Sleeve Length from Center Back	32	32 1/2	33	33 5/8	34 1/4	34 7/8	35 1/4	35 5/8

Bust: Measured across the chest one inch below armhole when laid flat.

Body Length at Back: Measured from high point shoulder to finished hem at back.

Sleeve Length from Center Back: Measure from Center Back neck to shoulder point to sleeve hem.

SIZE CHARTS

	XS	S	M	L	XL	XXL	3XL	4XL
Size	2	4/6	8/10	12/14	16/18	20/22	24/26	28/30
Bust	32-34	35-36	37-38	39-41	42-44	45-47	48-51	52-55

SPEC SHEET + MEASUREMENTS

PORT AUTHORITY.

Port Authority® Women's Active Hooded Soft Shell
Jacket. L719

HOW TO MEASURE



BUST

Measure under the arm and
around the fullest part of the bust
with arms down, keeping tape
horizontal.

COLORS



Deep Black
PMS BLACK
C



Dress Blue
Navy
PMS 533C



Grey Steel/
Deep Black
PMS 7540 C