

SPEC SHEET + MEASUREMENTS

PORT AUTHORITY.

Port Authority® Women's Collective Soft Shell Jacket. L901

Product photo



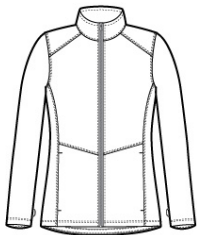
With a subtle mini ripstop texture, this stretch soft shell has double-needle stitching throughout and sleek design lines. The water-resistant film and DWR finish combine to resist wind and rain for weather protection.

- Can be zipped in and secured by snap attachments inside an outer layer
- 94/6 poly/spandex woven mini ripstop with a DWR finish bonded to a water-resistant film insert and a 100% polyester brushed tricot interior
- 8000MM fabric waterproof rating
- 5000G/M² fabric breathability rating
- Slightly longer length
- Molded center front zipper
- Front reverse-coil zippered covered pockets

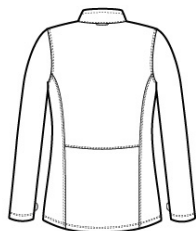
CARE INSTRUCTIONS

Machine wash cold with like colors; do not use fabric softener; tumble dry low; remove promptly; only non-chlorine bleach when needed; cool iron if necessary; do not dry clean.

Sketches



front



back

SPEC SHEET + MEASUREMENTS

PORT AUTHORITY

Port Authority® Women's Collective Soft Shell Jacket.
L901

PRODUCT MEASUREMENTS

	XS	S	M	L	XL	XXL	3XL	4XL
Size	2	4/6	8/10	12/14	16/18	20/22	24/26	28/30
Body Length at Front	27 1/2	28	28 1/2	29	29 1/2	30	30 1/2	31
Bust	18 1/2	19 1/2	20 1/2	22	23 1/2	25	27	29
Sleeve Length	32	32 1/2	33	33 5/8	34 1/4	34 7/8	35 1/4	35 5/8

Body Length at Front: Measure from high point shoulder to lowest point of hem at front.

Bust: Measured across the chest one inch below armhole when laid flat.

Sleeve Length: Start at center of neck and measure down shoulder, down sleeve to hem.

SIZE CHARTS

	XS	S	M	L	XL	XXL	3XL	4XL
Size	2	4/6	8/10	12/14	16/18	20/22	24/26	28/30
Bust	32-34	35-36	37-38	39-41	42-44	45-47	48-51	52-55

SPEC SHEET + MEASUREMENTS

PORT AUTHORITY.

Port Authority® Women's Collective Soft Shell Jacket.
L901

HOW TO MEASURE



BUST

Measure under the arm and around the fullest part of the bust with arms down, keeping tape horizontal.

COLORS



Deep Black
PMS BLACK
C



Graphite
PMS 7540C



Gusty Grey
PMS COOL
GRAY 8C



River Blue
Navy
PMS 533C