

SPEC SHEET + MEASUREMENTS



New Era® Women's Performance Terry Full-Zip Cowl. LNEA530

Product photo



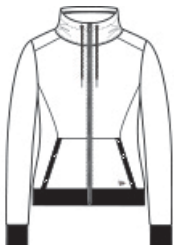
Perfect for year-round layering, this lightweight fleece style has a smooth face and soft terry backing for exceptional comfort.

- 6.5-ounce, 100% polyester French terry
- Heat transfer label for tag-free comfort
- Cowl neck
- Round drawcords with New Era metal tips
- Exposed Vislon® zipper
- Front seaming detail
- Front pouch pockets
- Embossed silicone New Era flag logo on left pocket
- 1x1 rib knit cuffs and hem
- Sits at high hip

CARE INSTRUCTIONS

Machine wash cold with like colors. Only non-chlorine bleach if needed. Tumble dry low, cool iron if necessary.

Sketches



front



back

SPEC SHEET + MEASUREMENTS



New Era® Women's Performance Terry Full-Zip Cowl. LNEA530

PRODUCT MEASUREMENTS

	XS	S	M	L	XL	2XL	3XL	4XL
Size	2	4/6	8/10	12/14	16/18	20/22	24/26	28/30
Body Length at Back	24	24 1/2	25	25 1/2	26	26 1/2	27	27 1/2
Bust	18 1/2	19 1/2	20 1/2	22	23 1/2	25	27	29
Sleeve Length from Center Back	32	32 1/2	33	33 5/8	34 1/4	34 7/8	35 1/4	35 5/8

Body Length at Back: Measured from high point shoulder to finished hem at back.

Bust: Measured across the chest one inch below armhole when laid flat.

Sleeve Length from Center Back: Measure from Center Back neck to shoulder point to sleeve hem.

SIZE CHARTS

	XS	S	M	L	XL	2XL	3XL	4XL
Size	2	4/6	8/10	12/14	16/18	20/22	24/26	28/30
Bust	32-34	35-36	37-38	39-41	42-44	45-47	48-51	52-55

SPEC SHEET + MEASUREMENTS



New Era® Women's Performance Terry Full-Zip Cowl.
LNEA530

HOW TO MEASURE



BUST

Measure under the arm and around the fullest part of the bust with arms down, keeping tape horizontal.

COLORS



Black
PMS BLACK
C



Dusty Mauve
Heather
PMS 693C



Graphite
Heather



True Navy
Heather
PMS 533C