

SPEC SHEET + MEASUREMENTS



OGIO® Women's Origin Jacket. LOE503

Product photo



COTTON-RICH SOFTNESS

STAY-COOL WICKING

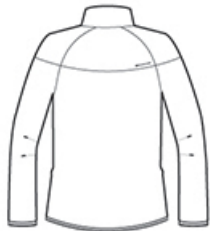
LAYERABLE WARMTH

- 8.1-ounce, 64/36 cotton/poly flatback knit
- OGIO heat transfer label for tag-free comfort
- Zip-through cowl collar
- Exposed coil zipper with molded cord pull
- Welded front zippered pockets with locking pulls
- Raglan sleeves with welded, articulated elbows
- O heat transfer at back right shoulder
- OGIO binding at cuffs and hem
- Stacked O heat transfers on sleeves
- Slight drop tail hem
- O heat transfer at front left hem

Sketches



front



back

CARE INSTRUCTIONS

Machine wash cold with like colors. Remove promptly. Only non chlorine bleach when needed. Tumble dry low. Cool iron if needed. Do not dry clean

PRODUCT MEASUREMENTS

	XS	S	M	L	XL	2XL	3XL	4XL
Body Length at Back	27	27 1/2	28	29	30	31	31 1/2	32
Bust	18 1/2	19 1/2	20 1/2	22	23 1/2	25	27	29
Size	2	4/6	8/10	12/14	16/18	20/22	24/26	28/30
Sleeve Length from Center Back	31 1/4	31 3/4	32 1/4	32 7/8	33 1/2	34 1/8	34 3/8	34 3/8

Body Length at Back: Measured from high point shoulder to finished hem at back.

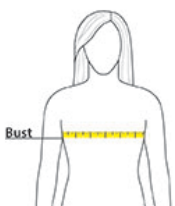
Bust: Measured across the chest one inch below armhole when laid flat.

Sleeve Length from Center Back: Measure from Center Back neck to shoulder point to sleeve hem.

SIZE CHARTS

	XS	S	M	L	XL	2XL	3XL	4XL
Bust	32-34	35-36	37-38	39-41	42-44	45-47	48-51	52-55
Size	2	4/6	8/10	12/14	16/18	20/22	24/26	28/30

HOW TO MEASURE



BUST

Measure under the arm and around the fullest part of the bust with arms down, keeping tape horizontal.