

SPEC SHEET + MEASUREMENTS



OGIO® Ladies Trainer Jacket. LOE710

Product photo



DESIGNED FOR ACTIVE PURSUITS LIKE RUNNING & CYCLING

WATER-RESISTANT

WIND-RESISTANT

ULTRA-BREATHABLE

ZONED VENTILATION

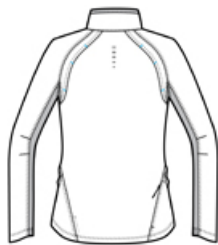
REFLECTIVE DETAILS

- 100% poly shell with inner knit collar
- 600MM fabric waterproof rating
- Articulated shaping for ease of movement
- Reflective OGIO heat transfer label for tag-free comfort
- Zip-through cadet collar
- Mesh vents at shoulders with contrast bar tacks
- Reflective O pattern at black side panels and under arms
- Reflective stacked O heat transfers at back neck and sleeves
- Side-back zippered pocket for valuables
- Raglan sleeves with shaped cuffs and inside cuff elastic for comfort
- Slight drop tail hem with drawcord and toggle for adjustability
- Reflective O heat transfer at front right hem
- Reflective O heat transfer at back left hem

Sketches



front



back

PRODUCT MEASUREMENTS

	XS	S	M	L	XL	2XL	3XL	4XL
Body Length at Back	26 3/4	27 3/8	28	28 5/8	29 1/4	29 7/8	30 1/2	31 1/8
Bust	18 1/2	19 1/2	20 1/2	22	23 1/2	25	27	29
Size	2	4/6	8/10	12/14	16/18	20/22	24/26	28/30
Sleeve Length	32 1/2	33	33 1/2	34 1/8	34 3/4	35 3/8	35 3/4	36 1/8

Body Length at Back: Measured from high point shoulder to finished hem at back.

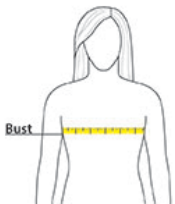
Bust: Measured across the chest one inch below armhole when laid flat.

Sleeve Length: Start at center of neck and measure down shoulder, down sleeve to hem.

SIZE CHARTS

	XS	S	M	L	XL	2XL	3XL	4XL
Bust	32-34	35-36	37-38	39-41	42-44	45-47	48-51	52-55
Size	2	4/6	8/10	12/14	16/18	20/22	24/26	28/30

HOW TO MEASURE



BUST

Measure under the arm and around the fullest part of the bust with arms down, keeping tape horizontal.