

SPEC SHEET + MEASUREMENTS



OGIO® Women's Torque II Jacket. LOG2010

Product photo



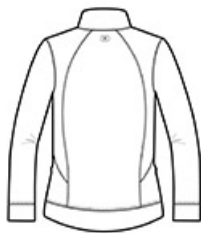
This water-resistant jacket has an on-trend fit and an ultra cool vibe thanks to its flattering length, curved drop tail hem, princess seams and welding details.

- 8-ounce, 100% poly interlock bonded to 6.5-ounce, 100% poly microfleece
- 5000MM fabric waterproof rating
- 5000G/M² fabric breathability rating
- Contrast color inner fleece
- Zip-through cadet collar
- O heat transfer at center back
- Front and back princess seams
- Reverse coil zipper with rubber OGIO zipper pull
- Front zippered pockets with welding details and matte black O zipper pulls
- Open cuffs
- OGIO woven badge on left side seam
- Curved drop tail hem

Sketches



front



back

CARE INSTRUCTIONS

Machine wash cold. Tumble dry low. Do not dryclean. Do not iron. Do not bleach.

SPEC SHEET + MEASUREMENTS



OGIO® Women's Torque II Jacket. LOG2010

PRODUCT MEASUREMENTS

	XS	S	M	L	XL	2XL	3XL	4XL
Size	2	4/6	8/10	12/14	16/18	20/22	24/26	28/30
Bust	18	19	20	21 1/2	23	24 1/2	26 1/2	28 1/2
Body Length at Back	25	25 1/2	26	26 1/2	27	27 1/2	28	28 1/2
Sleeve Length from Center Back	32	32 1/2	33	33 5/8	34 1/4	34 7/8	35 1/4	35 5/8

Bust: Measured across the chest one inch below armhole when laid flat.

Body Length at Back: Measured from high point shoulder to finished hem at back.

Sleeve Length from Center Back: Measure from Center Back neck to shoulder point to sleeve hem.

SIZE CHARTS

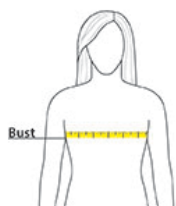
	XS	S	M	L	XL	2XL	3XL	4XL
Size	2	4/6	8/10	12/14	16/18	20/22	24/26	28/30
Bust	32-34	35-36	37-38	39-41	42-44	45-47	48-51	52-55

SPEC SHEET + MEASUREMENTS



OGIO® Women's Torque II Jacket. LOG2010

HOW TO MEASURE



BUST

Measure under the arm and around the fullest part of the bust with arms down, keeping tape horizontal.

COLORS



Blacktop
PMS Black C