

SPEC SHEET + MEASUREMENTS



OGIO® Ladies Axis Bonded Jacket. LOG724

Product photo



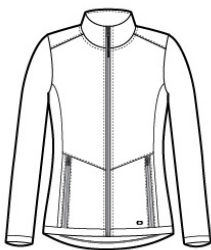
This ultrasleek jacket bonds a smooth fabric face and clean design details with OGIO-only attitude.

- 11.8-ounce, 74/18/8 poly/rayon/spandex
- Cadet collar
- OGIO heat transfer label for tag-free comfort
- Matte waterproof reverse coil zipper with rubber-wrapped zipper pull
- Front and back princess seams
- Waterproof zippered front pockets
- Raised silicone O on back neck
- Open cuffs and hem
- Raised silicone O at left hem

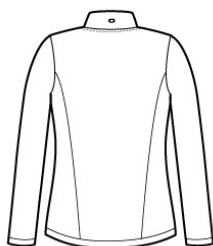
CARE INSTRUCTIONS

Machine wash cold with like colors. Do not bleach. Tumble dry low. Remove Promptly. Cool iron if needed.

Sketches



front



back

PRODUCT MEASUREMENTS

	XS	S	M	L	XL	2XL	3XL	4XL
Body Length at Front	26	26 5/8	27 1/4	27 7/8	28 1/2	29 1/8	29 3/4	30 3/8
Bust	17	18	19	20 1/2	22	23 1/2	25 1/2	27 1/2
Size	2	4/6	8/10	12/14	16/18	20/22	24/26	28/30
Sleeve Length	31	31 1/2	32	32 5/8	33 1/4	33 7/8	34 1/4	34 5/8

Body Length at Front: Measure from high point shoulder to lowest point of hem at front.

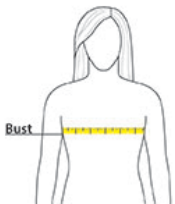
Bust: Measured across the chest one inch below armhole when laid flat.

Sleeve Length: Start at center of neck and measure down shoulder, down sleeve to hem.

SIZE CHARTS

	XS	S	M	L	XL	2XL	3XL	4XL
Bust	32-34	35-36	37-38	39-41	42-44	45-47	48-51	52-55
Size	2	4/6	8/10	12/14	16/18	20/22	24/26	28/30

HOW TO MEASURE



BUST

Measure under the arm and around the fullest part of the bust with arms down, keeping tape horizontal.