

SPEC SHEET + MEASUREMENTS



OGIO® Women's Trax Jacket. LOG726

Product photo



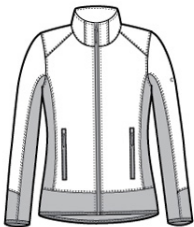
This water-resistant, forward-thinking jacket fuses a technical grid pattern with stretch side panels for style that moves at your speed.

- 100% woven poly shell bonded to 100% poly knit fleece with 93/7 poly/spandex fleece side panels
- OGIO heat transfer label for tag-free comfort
- Reverse coil zippers
- Right chest pocket
- Zippered front pockets with OGIO zipper pulls
- Black reflective O on left sleeve
- Open cuffs and open drop tail hem with binding

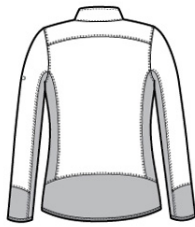
CARE INSTRUCTIONS

Machine wash cold with like colors. Do not bleach. Tumble dry low. Remove Promptly. Cool iron if needed.

Sketches



front



back

SPEC SHEET + MEASUREMENTS



OGIO® Women's Trax Jacket. LOG726

PRODUCT MEASUREMENTS

	XS	S	M	L	XL	2XL	3XL	4XL
Size	2	4/6	8/10	12/14	16/18	20/22	24/26	28/30
Body Length at Front	26 1/2	27	27 1/2	28	28 1/2	29	29 1/2	30
Bust	17 1/2	18 1/2	19 1/2	21	22 1/2	24	26	28
Sleeve Length	32	32 1/2	33	33 5/8	34 1/4	34 7/8	35 1/4	35 5/8

Body Length at Front: Measure from high point shoulder to lowest point of hem at front.

Bust: Measured across the chest one inch below armhole when laid flat.

Sleeve Length: Start at center of neck and measure down shoulder, down sleeve to hem.

SIZE CHARTS

	XS	S	M	L	XL	2XL	3XL	4XL
Size	2	4/6	8/10	12/14	16/18	20/22	24/26	28/30
Bust	32-34	35-36	37-38	39-41	42-44	45-47	48-51	52-55

SPEC SHEET + MEASUREMENTS



OGIO[®] Women's Trax Jacket. LOG726

HOW TO MEASURE



BUST

Measure under the arm and around the fullest part of the bust with arms down, keeping tape horizontal.

COLORS



Blacktop
PMS BLACK
C