

SPEC SHEET + MEASUREMENTS



OGIO® Women's Transition Full Zip. LOG821

Product photo



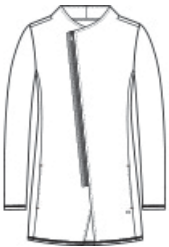
Transition easily between a corporate look and afterhours style in this double-knit piece that has OGIO edge.

- 11.4-ounce, 52/45/3 cotton/poly/spandex fleece
- OGIO heat transfer label for tag-free comfort
- Black grosgrain detail at zipper
- Asymmetrical metal molded zipper with debossed O on zipper pull
- Matte black debossed O metal badge on front left hem
- Longer tunic length

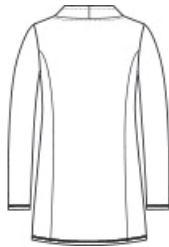
CARE INSTRUCTIONS

Machine wash with like colors. Only non-chlorine bleach, when needed. Tumble dry low. Cool iron, if necessary.

Sketches



front



back

PRODUCT MEASUREMENTS

	XS	S	M	L	XL	2XL	3XL	4XL
Body Length at Back	28 7/8	29 3/8	29 7/8	30 3/8	30 7/8	31 3/8	31 7/8	32 3/8
Bust	17	18	19	20 1/2	22	23 1/2	25 1/2	27 1/2
Sleeve Length from Center Back	31 1/2	32	32 1/2	33 1/8	33 3/4	34 3/8	34 3/4	35 1/8

Body Length at Back: Measured from high point shoulder to finished hem at back.

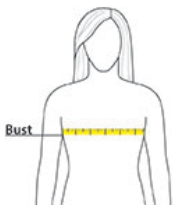
Bust: Measured across the chest one inch below armhole when laid flat.

Sleeve Length from Center Back: Measure from Center Back neck to shoulder point to sleeve hem.

SIZE CHARTS

	XS	S	M	L	XL	2XL	3XL	4XL
Bust	32-34	35-36	37-38	39-41	42-44	45-47	48-51	52-55
Size	2	4/6	8/10	12/14	16/18	20/22	24/26	28/30

HOW TO MEASURE



BUST

Measure under the arm and around the fullest part of the bust with arms down, keeping tape horizontal.