

SPEC SHEET + MEASUREMENTS



OGIO® Women's Outstretch Full-Zip. LOG830

Product photo



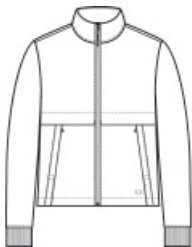
Stretch your layering options with this modern full-zip that was inspired by the classic bomber jacket.

- 8.5-ounce, 87/13 cotton/spandex knit
- Lightly brushed
- OGIO heat transfer label for tag-free comfort
- Center front reverse coil zipper with rubber OGIO pull
- Front flange across body
- Black reflective O heat transfer on front left hem
- Zip-through collar
- Front zippered pockets
- Rib knit cuffs
- Open hem

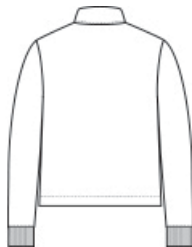
CARE INSTRUCTIONS

Machine Wash Cold With Like Colors. Do Not Use Fabric Softener. Do Not Bleach. Tumble Dry Low. Remove Promptly. Cool Iron If Necessary.

Sketches



front



back

SPEC SHEET + MEASUREMENTS



OGIO® Women's Outstretch Full-Zip. LOG830

PRODUCT MEASUREMENTS

	XS	S	M	L	XL	2XL	3XL	4XL
Size	2	4/6	8/10	12/14	16/18	20/22	24/26	28/30
Body Length at Back	22	22 1/2	23	23 1/2	24	24 1/2	25	25 1/2
Bust	19	20	21	22 1/2	24	25 1/2	27 1/2	29 1/2
Sleeve Length from Center Back	32	32 1/2	33	33 5/8	34 1/4	34 7/8	35 1/4	35 5/8

Body Length at Back: Measured from high point shoulder to finished hem at back.

Bust: Measured across the chest one inch below armhole when laid flat.

Sleeve Length from Center Back: Measure from Center Back neck to shoulder point to sleeve hem.

SIZE CHARTS

	XS	S	M	L	XL	2XL	3XL	4XL
Size	2	4/6	8/10	12/14	16/18	20/22	24/26	28/30
Bust	32-34	35-36	37-38	39-41	42-44	45-47	48-51	52-55

SPEC SHEET + MEASUREMENTS



OGIO® Women's Outstretch Full-Zip. LOG830

HOW TO MEASURE



BUST

Measure under the arm and around the fullest part of the bust with arms down, keeping tape horizontal.

COLORS



Blacktop
PMS BLACK
C



River Blue
Navy
PMS 7547C