

SPEC SHEET + MEASUREMENTS

PORT AUTHORITY.

Port Authority® Ladies Torrent Waterproof Pant. LPT333

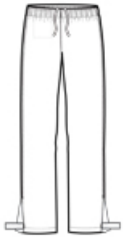
Product photo



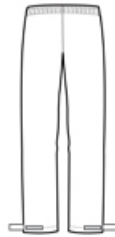
Our fully seam-sealed, waterproof pant coordinates with the Torrent Waterproof Jacket for head-to-toe weather protection. Folds into a convenient carry pouch for easy, compact storage.

- 100% polyester
- 100% polyester mesh to the knee
- 5000MM fabric waterproof rating
- 1000G/M2 fabric breathability rating
- Elastic waistband with drawcord
- Hook and loop gussets at lower legs for easy on/off
- Drawstring carry pouch included

Sketches



front



back

SPEC SHEET + MEASUREMENTS

PORT AUTHORITY

Port Authority® Ladies Torrent Waterproof Pant. LPT333

PRODUCT MEASUREMENTS

| | XS | S | M | L | XL | XXL | 3XL | 4XL |
|----------------|--------|--------|--------|--------|--------|--------|--------|--------|
| Inseam | 31 | 31 | 31 | 31 | 31 | 31 | 31 | 31 |
| Size | 2 | 4/6 | 8/10 | 12/14 | 16/18 | 20/22 | 24/26 | 28/30 |
| Waist Extended | 17 1/2 | 18 1/2 | 19 1/2 | 21 | 22 1/2 | 24 | 26 | 28 |
| Waist Relaxed | 14 | 14 1/2 | 15 | 16 1/2 | 18 | 19 1/2 | 21 1/2 | 23 1/2 |

Inseam: Measured from crotch seam to hem.

SIZE CHARTS

| | XS | S | M | L | XL | XXL | 3XL | 4XL |
|--------|--------|-------|--------|-------|--------|-------|-------|-------|
| Hip | 34-36 | 37-38 | 39-40 | 41-43 | 44-46 | 47-49 | 50-53 | 54-57 |
| Inseam | 30 1/2 | 31 | 31 1/2 | 32 | 32 1/2 | 33 | 33 | 33 |
| Size | 2 | 4/6 | 8/10 | 12/14 | 16/18 | 20/22 | 24/26 | 28/30 |
| Waist | 24-26 | 27-28 | 29-30 | 31-33 | 34-36 | 37-39 | 40-43 | 44-47 |

SPEC SHEET + MEASUREMENTS

PORT AUTHORITY.

Port Authority® Ladies Torrent Waterproof Pant. LPT333

HOW TO MEASURE

HIPS

With feet together, measure around the fullest part of hips, keep tape horizontal.