

SPEC SHEET + MEASUREMENTS

SPORT-TEK

Sport-Tek® Ladies Sport-Wick® Fleece Full-Zip Hooded Jacket. LST238

Product photo



Whether used during warm up or cool down--or even outside the gym--this anti-static jacket performs by wicking moisture for ultimate comfort.

- 5.5-ounce, 100% polyester
- Tag-free label
- Three-panel hood
- Self-fabric hood lining
- Dyed-to-match drawcord with metal tips
- Taped neck
- Self-fabric cuffs and hem
- Front pouch pocket

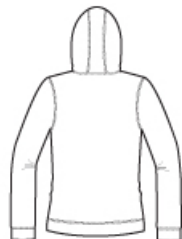
CARE INSTRUCTIONS

Machine wash cold. Do not bleach. Tumble dry low. Do not use softener. Warm iron if necessary.

Sketches



front



back

SPEC SHEET + MEASUREMENTS



Sport-Tek[®] Ladies Sport-Wick[®] Fleece Full-Zip Hooded Jacket. LST238

PRODUCT MEASUREMENTS

| | XS | S | M | L | XL | XXL | 3XL | 4XL | 5XL | 6XL |
|----------------------|--------|--------|--------|--------|--------|--------|--------|--------|--------|--------|
| Body Length at Front | 26 | 26 1/2 | 27 | 27 1/2 | 28 | 28 1/2 | 29 | 29 1/2 | 29 1/2 | 29 1/2 |
| Bust | 18 1/4 | 19 1/4 | 20 1/4 | 21 3/4 | 23 1/4 | 24 3/4 | 26 3/4 | 28 3/4 | 30 3/4 | 32 3/4 |
| Sleeve From Shoulder | 33 | 33 1/2 | 34 | 34 5/8 | 35 1/4 | 35 7/8 | 36 1/4 | 36 5/8 | 36 3/4 | 36 3/4 |

Body Length at Front: Measure from high point shoulder to lowest point of hem at front.

Bust: Measured across the chest one inch below armhole when laid flat.

Sleeve From Shoulder: Measured from high point of shoulder to finished hem at sleeve.

SIZE CHARTS

| | XS | S | M | L | XL | XXL | 3XL | 4XL |
|------|-------|-------|-------|-------|-------|-------|-------|-------|
| Bust | 32-34 | 35-36 | 37-38 | 39-41 | 42-44 | 45-47 | 48-51 | 52-55 |
| Size | 2 | 4/6 | 8/10 | 12/14 | 16/18 | 20/22 | 24/26 | 28/30 |

SPEC SHEET + MEASUREMENTS

SPORT-TEK

Sport-Tek® Ladies Sport-Wick® Fleece Full-Zip Hooded Jacket. LST238

HOW TO MEASURE



BUST

Measure under the arm and around the fullest part of the bust with arms down, keeping tape horizontal.