

SPEC SHEET + MEASUREMENTS

SPORT-TEK

Sport-Tek® Women's PosiCharge® Competitor™ Hooded Pullover. LST358

Product photo



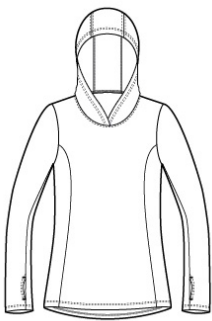
This lightweight hooded pullover locks in color and wicks moisture. It's versatile enough for year-round wear.

- 3.8-ounce, 100% polyester interlock with PosiCharge technology
- Removable tag for comfort and relabeling
- Three-panel hood
- Front princess seams
- Set-in sleeves
- Thumbholes to keep hands warm
- Open cuffs and hem

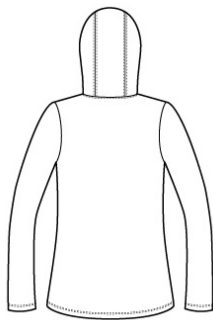
CARE INSTRUCTIONS

Machine wash cold with like colors. Only non-chlorine bleach. When needed tumble dry low, remove promptly. Cool iron if needed. Do not use softener. Do not dry clean.

Sketches



front



back

SPEC SHEET + MEASUREMENTS

SPORT-TEK

Sport-Tek® Women's PosiCharge® Competitor™ Hooded Pullover. LST358

PRODUCT MEASUREMENTS

	XS	S	M	L	XL	XXL	3XL	4XL
Body Length at Front	27	27 1/2	28	28 1/2	29	29 1/2	30	30 1/2
Bust	17 3/4	18 3/4	19 3/4	21 1/4	22 3/4	24 1/4	26 1/4	28 1/4
Size	2	4/6	8/10	12/14	16/18	20/22	24/26	28/30
Sleeve Length	33 1/2	34	34 1/2	35	35 1/2	35 7/8	36	36 5/8

Body Length at Front: Measure from high point shoulder to lowest point of hem at front.

Bust: Measured across the chest one inch below armhole when laid flat.

Sleeve Length: Start at center of neck and measure down shoulder, down sleeve to hem.

SIZE CHARTS

	XS	S	M	L	XL	XXL	3XL	4XL
Bust	32-34	35-36	37-38	39-41	42-44	45-47	48-51	52-55
Size	2	4/6	8/10	12/14	16/18	20/22	24/26	28/30

SPEC SHEET + MEASUREMENTS

SPORT-TEK

Sport-Tek® Women's PosiCharge® Competitor™ Hooded Pullover. LST358

HOW TO MEASURE



BUST

Measure under the arm and around the fullest part of the bust with arms down, keeping tape horizontal.