

# SPEC SHEET + MEASUREMENTS

**SPORT-TEK**

## Sport-Tek® Ladies Heather Colorblock Raglan Hooded Wind Jacket. LST40

### Product photo



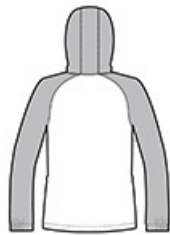
A heather print gives this water-resistant wind jacket a sporty, energized look.

- 100% polyester shell
- 100% polyester mesh body and hood lining
- 100% polyester woven sleeve lining
- Tag-free label
- Three-panel hood with drawcord and toggles
- Angled chin guard for additional comfort
- Exposed molded zipper
- Princess seams with integrated front slash pockets
- Half elastic, half self-fabric cuffs for comfort
- Decoration access pocket
- Slight drop tail hem
- Drawcord hem with toggles

### Sketches



front



back

### CARE INSTRUCTIONS

Machine wash cold. Only non-chlorine bleach when needed.  
Tumble dry low. Warm iron if necessary. Do not dry clean.

# SPEC SHEET + MEASUREMENTS



## Sport-Tek<sup>®</sup> Ladies Heather Colorblock Raglan Hooded Wind Jacket. LST40

### PRODUCT MEASUREMENTS

	XS	S	M	L	XL	XXL	3XL	4XL
Body Length at Back	26	26 1/2	27	27 1/2	28	28 1/2	29	29 1/2
Bust	20	21	22	23 1/2	25	26 1/2	28 1/2	30 1/2
Size	2	4/6	8/10	12/14	16/18	20/22	24/26	28/30
Sleeve Length from Center Back	32 1/2	33	33 1/2	34 1/8	34 3/4	35 3/8	35 3/4	36 1/8

**Body Length at Back:** Measured from high point shoulder to finished hem at back.

**Bust:** Measured across the chest one inch below armhole when laid flat.

**Sleeve Length from Center Back:** Measure from Center Back neck to shoulder point to sleeve hem.

### SIZE CHARTS

	XS	S	M	L	XL	XXL	3XL	4XL
Bust	32-34	35-36	37-38	39-41	42-44	45-47	48-51	52-55
Size	2	4/6	8/10	12/14	16/18	20/22	24/26	28/30

# SPEC SHEET + MEASUREMENTS

**SPORT-TEK**

Sport-Tek® Ladies Heather Colorblock Raglan Hooded  
Wind Jacket. LST40

## HOW TO MEASURE

---



### **BUST**

Measure under the arm and around the fullest part of the bust with arms down, keeping tape horizontal.