

# SPEC SHEET + MEASUREMENTS

**SPORT-TEK**

## Sport-Tek® Women's PosiCharge® Long Sleeve Tri-Blend Wicking Scoop Neck Raglan Tee. LST400LS

### Product photo



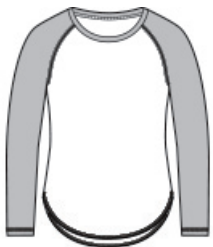
This ultracomfortable tee combines moisture-wicking performance, unbeatable tri-blend softness and PosiCharge technology to lock in color.

- 4.4-ounce, 75/13/12 poly/cotton/rayon jersey with PosiCharge technology
- 4.6-ounce, 75/13/12 poly/cotton/rayon jersey with PosiCharge technology (Black Triad Solid)
- 4.7-ounce, 75/13/12 poly/cotton/rayon jersey with PosiCharge technology (White Triad Solid)
- Removable tag for comfort and relabeling
- Dyed-to-match neck taping
- Raglan sleeves
- Curved drop tail hem

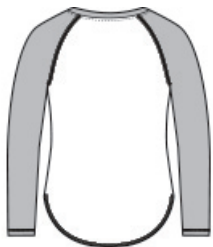
### CARE INSTRUCTIONS

Machine wash cold with like colors, do not use fabric softener, only non-chlorine bleach when needed, tumble dry low, cool iron, do not dry clean.

### Sketches



front



back

# SPEC SHEET + MEASUREMENTS

**SPORT-TEK**

Sport-Tek® Women's PosiCharge® Long Sleeve Tri-Blend  
Wicking Scoop Neck Raglan Tee. LST400LS

## PRODUCT MEASUREMENTS

|                     | XS | S      | M    | L      | XL     | XXL    | 3XL    | 4XL    |
|---------------------|----|--------|------|--------|--------|--------|--------|--------|
| Body Length at Back | 27 | 27 1/2 | 28   | 28 1/2 | 29     | 29 1/2 | 30     | 30 1/2 |
| Bust                | 18 | 19     | 20   | 21 1/2 | 23     | 24 1/2 | 26 1/2 | 28 1/2 |
| Size                | 2  | 4/6    | 8/10 | 12/14  | 16/18  | 20/22  | 24/26  | 28/30  |
| Sleeve Length       | 31 | 31 1/2 | 32   | 32 5/8 | 33 1/4 | 33 7/8 | 34 1/4 | 35 5/8 |

**Body Length at Back:** Measured from high point shoulder to finished hem at back.

**Bust:** Measured across the chest one inch below armhole when laid flat.

**Sleeve Length:** Start at center of neck and measure down shoulder, down sleeve to hem.

## SIZE CHARTS

|      | XS    | S     | M     | L     | XL    | XXL   | 3XL   | 4XL   |
|------|-------|-------|-------|-------|-------|-------|-------|-------|
| Bust | 32-34 | 35-36 | 37-38 | 39-41 | 42-44 | 45-47 | 48-51 | 52-55 |
| Size | 2     | 4/6   | 8/10  | 12/14 | 16/18 | 20/22 | 24/26 | 28/30 |

# SPEC SHEET + MEASUREMENTS

**SPORT-TEK**

Sport-Tek® Women's PosiCharge® Long Sleeve Tri-Blend  
Wicking Scoop Neck Raglan Tee. LST400LS

## HOW TO MEASURE

---



### **BUST**

Measure under the arm and around the fullest part of the bust with arms down, keeping tape horizontal.

## COLORS

---