

# SPEC SHEET + MEASUREMENTS

**SPORT-TEK**

## Sport-Tek® Ladies Embossed Hooded Wind Jacket. LST53

### Product photo



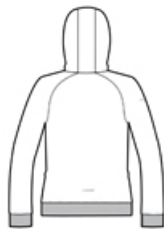
This wind-resistant, water-repellent jacket delivers powerful performance and features an embossed geometric pattern and reflective details for an unrivaled look.

- 100% polyester embossed woven body
- 100% polyester mesh body and hood lining
- 100% polyester woven sleeve lining
- Gently contoured silhouette
- Three-panel hood with drawcord and toggles
- Tag-free label
- Raglan sleeves
- Reverse coil zipper
- Reflective details on right sleeve and lower back
- Port Pocket™ for easy embroidery access
- Elastic trim at cuffs and hem
- Front zippered pockets

### Sketches



front



back

### CARE INSTRUCTIONS

Machine wash cold gentle cycle with like colors. Use mild detergent. Remove immediately. Do not allow to lay on itself when wet. Do not bleach. Tumble dry low. Cool iron if needed. Do not dry clean

# SPEC SHEET + MEASUREMENTS



## Sport-Tek® Ladies Embossed Hooded Wind Jacket. LST53

### PRODUCT MEASUREMENTS

	XS	S	M	L	XL	XXL	3XL	4XL
Body Length at Back	25	25 1/2	26	26 1/2	27	27 1/2	28	28 1/2
Bust	20	21	22	23 1/2	25	26 1/2	28 1/2	30 1/2
Size	2	4/6	8/10	12/14	16/18	20/22	24/26	28/30
Sleeve Length	32 1/2	33	33 1/2	34 1/8	34 3/4	35 3/8	35 3/4	36 1/8

**Body Length at Back:** Measured from high point shoulder to finished hem at back.

**Bust:** Measured across the chest one inch below armhole when laid flat.

**Sleeve Length:** Start at center of neck and measure down shoulder, down sleeve to hem.

### SIZE CHARTS

	XS	S	M	L	XL	XXL	3XL	4XL
Bust	32-34	35-36	37-38	39-41	42-44	45-47	48-51	52-55
Size	2	4/6	8/10	12/14	16/18	20/22	24/26	28/30

# SPEC SHEET + MEASUREMENTS

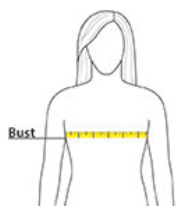
**SPORT-TEK**

Sport-Tek® Ladies Embossed Hooded Wind Jacket.

LST53

## HOW TO MEASURE

---



### **BUST**

Measure under the arm and around the fullest part of the bust with arms down, keeping tape horizontal.