

## SPEC SHEET + MEASUREMENTS

**SPORT-TEK**

### Sport-Tek® Women's Exchange 1.5 Long Sleeve Crew. LST710

#### Product photo



Why did we name this stretchable, moisture-wicking crew the 1.5? Because it's light enough to wear as a tee, but warm enough to be a light layer.

- 5.6-ounce, 88/12 poly/spandex
- Removable tag for comfort and relabeling
- Coverstitch seams throughout
- Thumbholes to keep hands warm

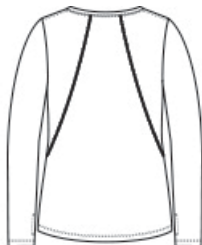
#### CARE INSTRUCTIONS

Machine wash with like colors. Do not use fabric softener, only non-chlorine bleach, when needed. Tumble dry low, remove promptly. Cool iron if necessary. Do not dry clean.

#### Sketches



front



back

# SPEC SHEET + MEASUREMENTS



## Sport-Tek® Women's Exchange 1.5 Long Sleeve Crew. LST710

### PRODUCT MEASUREMENTS

	XS	S	M	L	XL	XXL	3XL	4XL
Body Length at Back	27	27 1/2	28	28 1/2	29	29 1/2	30	30 1/2
Bust	17 3/4	18 3/4	19 3/4	21 1/4	22 3/4	24 1/4	26 1/4	28 1/4
Sleeve Length from Center Back	32	32 1/2	33	33 5/8	34 1/4	34 7/8	35 1/4	35 5/8

**Body Length at Back:** Measured from high point shoulder to finished hem at back.

**Bust:** Measured across the chest one inch below armhole when laid flat.

**Sleeve Length from Center Back:** Measure from Center Back neck to shoulder point to sleeve hem.

### SIZE CHARTS

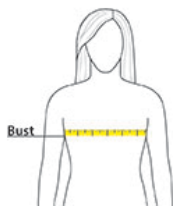
	XS	S	M	L	XL	XXL	3XL	4XL
Size	2	4/6	8/10	12/14	16/18	20/22	24/26	28/30
Bust	32-34	35-36	37-38	39-41	42-44	45-47	48-51	52-55

# SPEC SHEET + MEASUREMENTS



Sport-Tek® Women's Exchange 1.5 Long Sleeve Crew.  
LST710

## HOW TO MEASURE



### BUST

Measure under the arm and around the fullest part of the bust with arms down, keeping tape horizontal.

## COLORS



Dark Denim  
Heather  
PMS 2380C



Graphite  
Heather  
PMS COOL  
GRAY 11C



Grey Heather  
PMS COOL  
GRAY 10C



Hyacinth  
Heather  
PMS 3543C



True Royal  
Heather  
PMS 7687C