

SPEC SHEET + MEASUREMENTS

PORT AUTHORITY.

Port Authority® Women's Marled Cardigan Sweater.
LSW415

Product photo



Made for layering, this two-toned marled cardigan livens up any office or casual look.

- 60/40 cotton/acrylic
- Fully fashioned seams
- Dyed-to-match buttons
- Welt pockets with rib knit trim
- 2x2 rib knit cuffs and hem

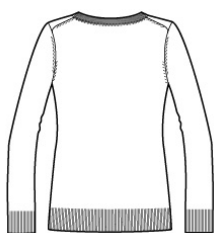
CARE INSTRUCTIONS

Machine wash cold with like colors, only non-chlorine bleach when needed, tumble dry low, low iron if needed.

Sketches



front



back

SPEC SHEET + MEASUREMENTS

PORT AUTHORITY

Port Authority® Women's Marled Cardigan Sweater.
LSW415

PRODUCT MEASUREMENTS

	XS	S	M	L	XL	XXL	3XL	4XL
Body Length at Front	26 7/8	27 3/8	27 7/8	28 3/8	28 7/8	28 7/8	29 3/8	29 3/8
Bust	17 1/4	18 1/4	19 1/4	20 3/4	22 1/4	23 3/4	25 3/4	27 3/4
Size	2	4/6	8/10	12/14	16/18	20/22	24/26	28/30
Sleeve Length	33	33 1/2	34	34 5/8	35 1/4	35 1/4	35 7/8	35 7/8

Body Length at Front: Measure from high point shoulder to lowest point of hem at front.

Bust: Measured across the chest one inch below armhole when laid flat.

Sleeve Length: Start at center of neck and measure down shoulder, down sleeve to hem.

SIZE CHARTS

	XS	S	M	L	XL	XXL	3XL	4XL
Chest	32-34	35-36	37-38	39-41	42-44	45-47	48-51	52-55
Size	2	4/6	8/10	12/14	16/18	20/22	24/26	28/30

SPEC SHEET + MEASUREMENTS

PORT AUTHORITY.

Port Authority® Women's Marled Cardigan Sweater.
LSW415

HOW TO MEASURE



BUST

Measure under the arm and around the fullest part of the bust with arms down, keeping tape horizontal.