

SPEC SHEET + MEASUREMENTS



Mercer+Mettle® Stretch 1/4-Zip Pullover. MM3010

Product photo



Add more lifestyle to your work style with this French terry classic. It features refined details like side seaming and back yoke piecing for an easy fit. Other features include turned cuffs and hem, and a dyed-to-match reverse coil zipper for a modern-lux aesthetic. **Fabric+Weight**

- 7.4-ounce, 53/41/6 rayon/poly/spandex French terry

Features+Benefits

- Mock neck
- Dyed-to-match reverse coil zipper and matte black pull
- Side seam piecing
- Arm seaming
- Back yoke piecing
- Turned cuffs and hem

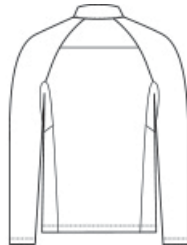
CARE INSTRUCTIONS

Turn Garment Inside Out. Machine Wash Cold With Like Colors. Do Not Use Fabric Softener. Do Not Bleach. Tumble Dry Low. Remove Promptly. Cool Iron. If Necessary.

Sketches



front



back

SPEC SHEET + MEASUREMENTS



Mercer+Mettle® Stretch 1/4-Zip Pullover. MM3010

PRODUCT MEASUREMENTS

	XS	S	M	L	XL	2XL	3XL	4XL
Body Length at Back	26	27	28	29	30	31	31 3/4	32 1/2
Chest	18 1/4	19 3/4	21 1/4	22 3/4	24 3/4	26 3/4	29 1/4	32 1/4
Raglan Sleeve Length	32 3/4	33 1/2	34 1/4	35	35 3/4	36 1/2	37 1/4	38

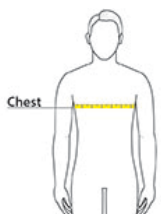
Body Length at Back: Measured from high point shoulder to finished hem at back.

Chest: Measured across the chest one inch below armhole when laid flat.

SIZE CHARTS

	XS	S	M	L	XL	2XL	3XL	4XL
Chest	32-34	35-37	38-40	41-43	44-47	48-51	52-56	57-61

HOW TO MEASURE



CHEST

Measure under the arm and around the fullest part of the chest with arms down, keeping tape horizontal.

SPEC SHEET + MEASUREMENTS



Mercer+Mettle® Stretch 1/4-Zip Pullover. MM3010

COLORS



Anchor Grey
PMS 426C



Blue Note



Deep Black
PMS BLACK
C



Gusty Grey
PMS COOL
GREY 8C



Night Navy
PMS 532C